



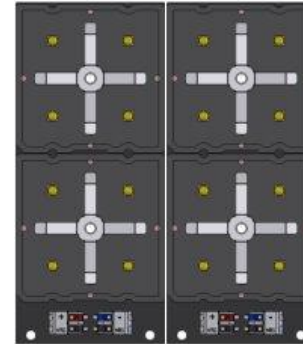
## LEVO<sub>3</sub>(L)/RNM(L)/REM MODULE | OPTICS OVERVIEW

Hess GmbH Licht + Form

# LED-MODUL

## LEVO<sub>3</sub>(L)/RNM(L)

- Rectangular aluminium core circuit board with 8 high power LEDs in a grid pattern
- 8x Osram Oslon Square
- PMMA cluster optics and thermal conductive pad
- 17 different optics
- Max. 5 SDCM
- Hess:  
min. CRI 80 (2700K/3000K/4000K)  
min. CRI 40 (1800K)
- Vulkan:  
min. CRI 70 (2700K/3000K/4000K)  
min. CRI 40 (1800K)



2x LEVO<sub>3</sub> Board

2x 8 LED

≅ LEVO<sub>3</sub> 28W

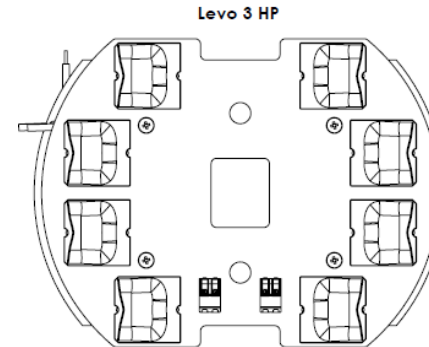


LEVO<sub>3</sub> 28W  
08-Optic

# LED-MODUL

## LEVO<sub>3</sub> HP

- Round aluminium core circuit board with 8 high power LEDs in a circle arrangement
- 8x Cree Xlamp XHP50.2
- PMMA single optics
- 8 different optics
- Max. 5 SDCM
- min. CRI 80 (2700K/3000K/4000K)



LEVO<sub>3</sub> HP Board

8 LEDs

≙ LEVO<sub>3</sub> HP 50W

# LEVO<sub>3</sub>

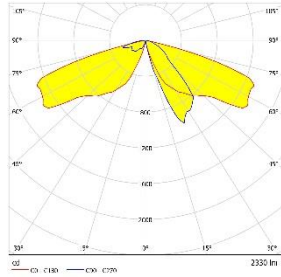
---

Optics Overview | Pole Top Mounted Luminaires  
Mounting Height 4,5m

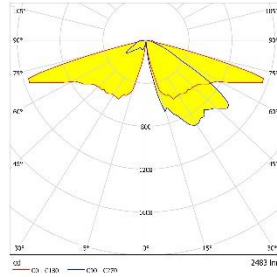
# LEVO3

## Optics Overview | Pole Top Mounted Luminaires

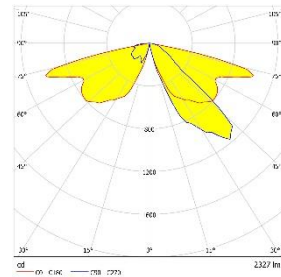
LEVO3 O1



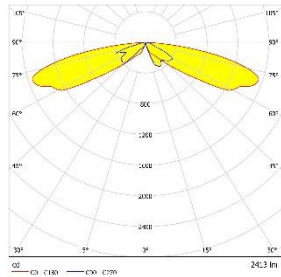
LEVO3 O2



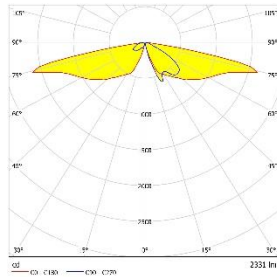
LEVO3 O3



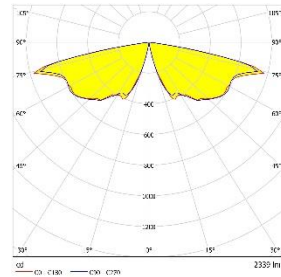
LEVO3 O4



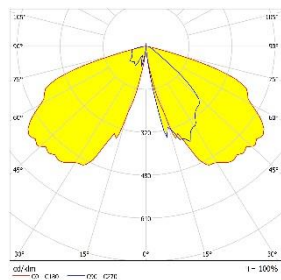
LEVO3 O7



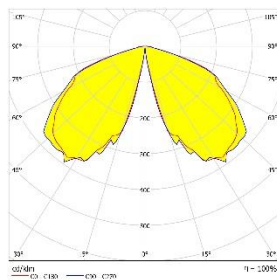
LEVO3 O8



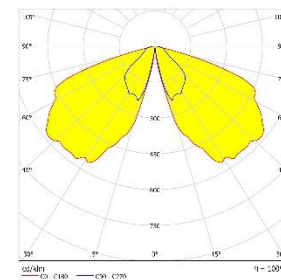
LEVO3 O17



LEVO3 O18

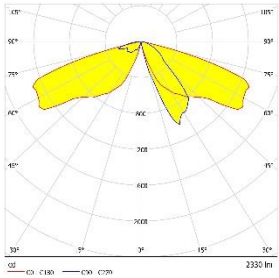


LEVO3 O19



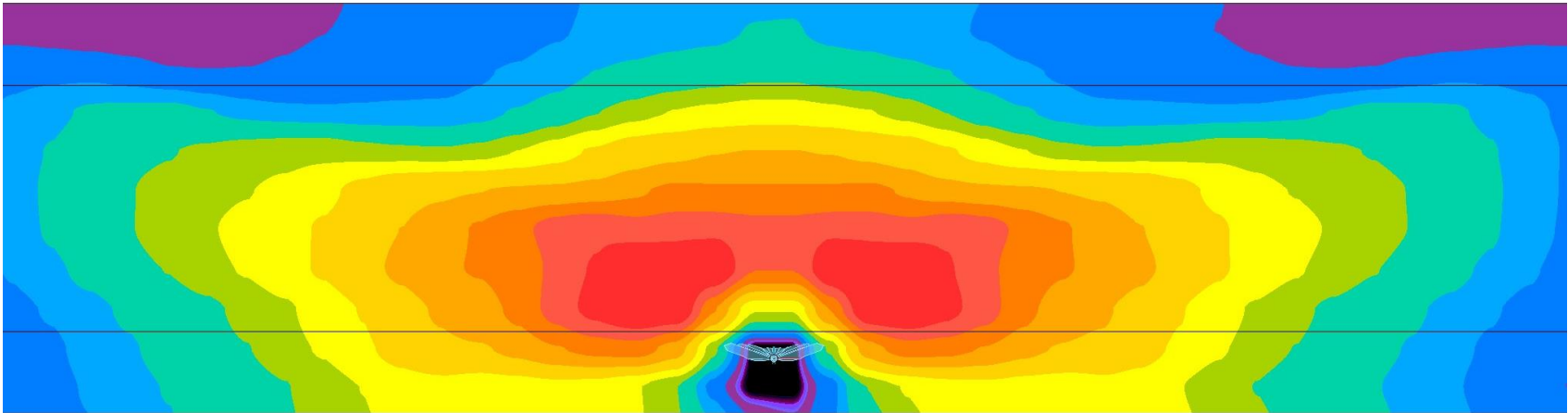
## LEVO3 O1

Flux-Code CIE Nr. 3 >95 %

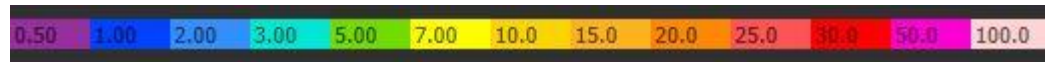


**Light distribution:**  
Asymmetrical,  
optimised for luminance

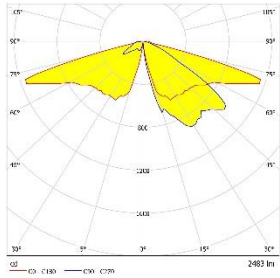
**Characteristic:**  
For main road illumination



Mounting Height: 4,5m  
Distance to roadway: 0,5m  
Width of roadway: 4,5m  
Width of walkway: 1,5m

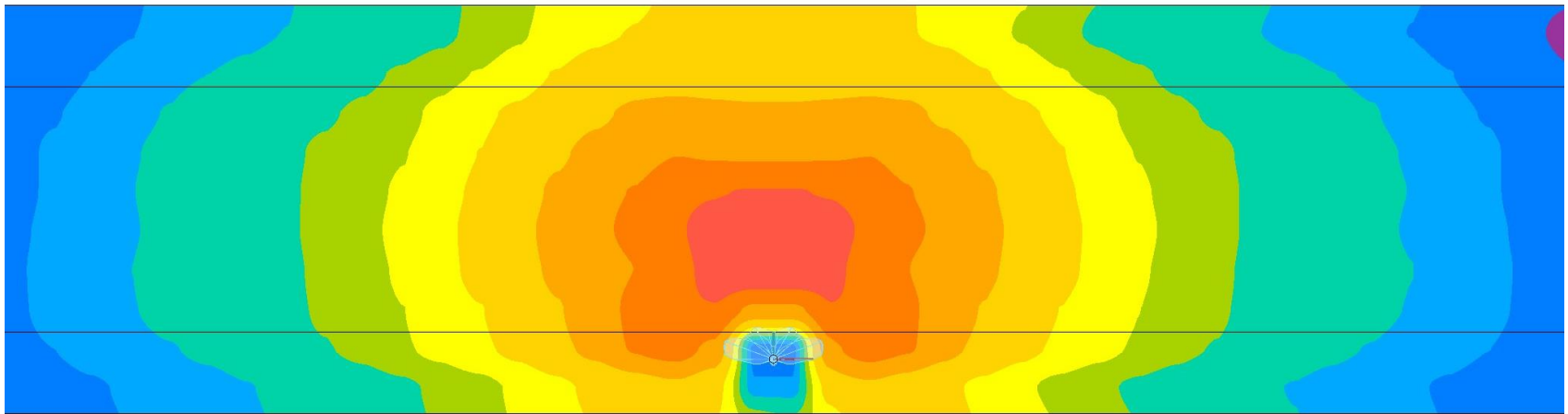


### LEVO3 O2



**Light distribution:**  
Asymmetrical, optimised  
for illuminance

**Characteristic:**  
For main road illumination

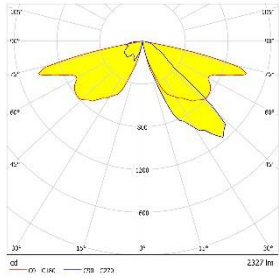


Mounting Height: 4,5m  
Distance to roadway: 0,5m  
Width of roadway: 4,5m  
Width of walkway: 1,5m



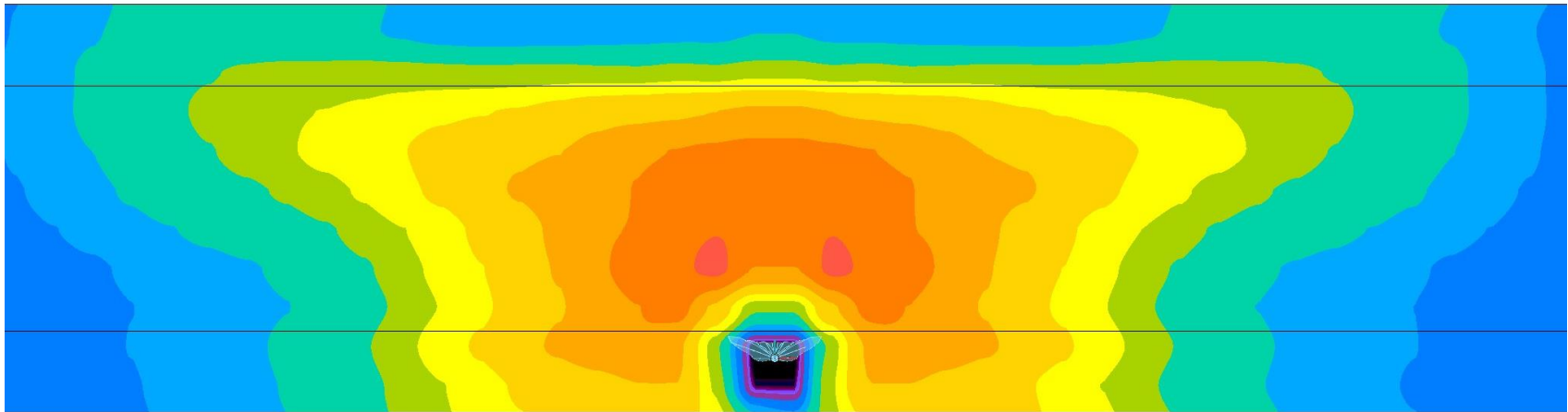


### LEVO3 O3

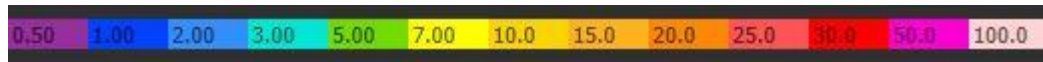


**Light distribution:**  
Asymmetrical,  
optimised for illuminance

**Characteristic:**  
For main road illumination

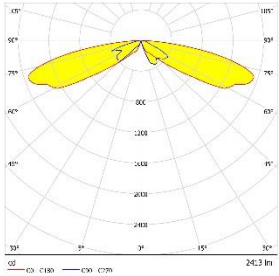


Mounting Height: 4,5m  
Distance to roadway: 0,5m  
Width of roadway: 4,5m  
Width of walkway: 1,5m



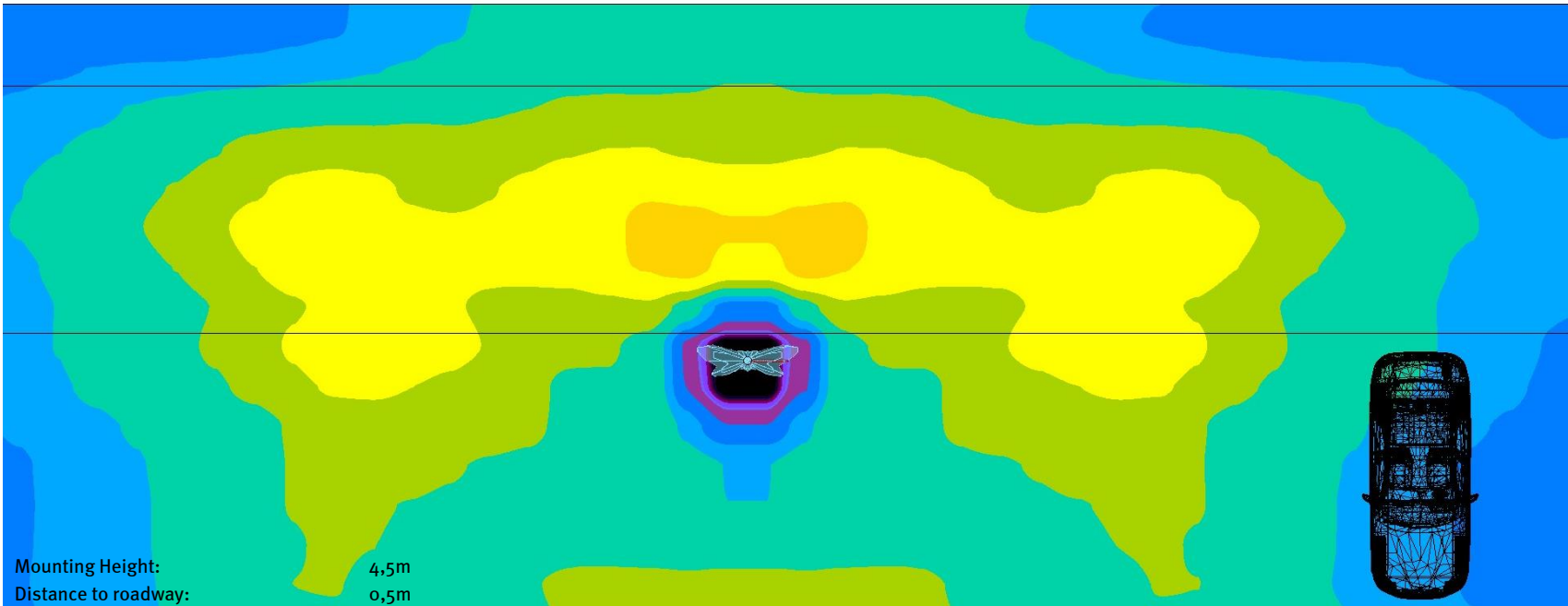


### LEVO3 O4



**Light distribution:**  
Asymmetrical wide

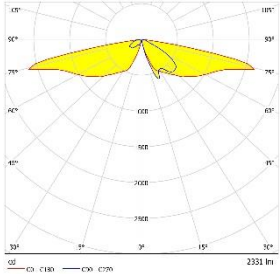
**Characteristic:**  
Characteristic: For foot and cycle path illumination



Mounting Height: 4,5m  
Distance to roadway: 0,5m  
Width of roadway: 4,5m  
Width of walkway: 1,5m & 5,0m

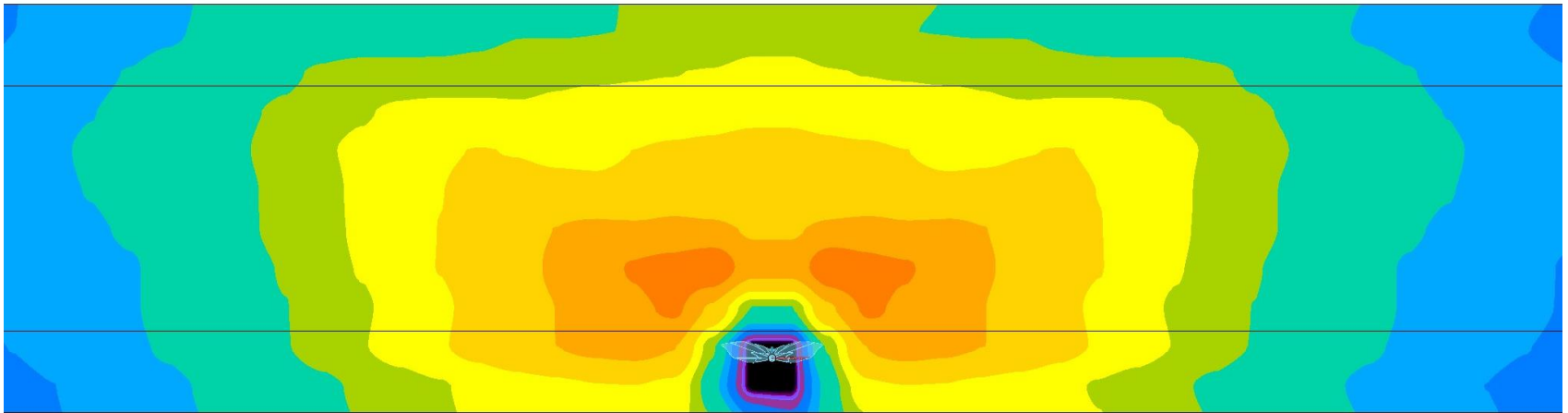


### LEVO3 07



**Light distribution:**  
Asymmetrical wide for luminance of up to 0,5 cd/m<sup>2</sup>

**Characteristic:**  
For main and residential road illumination



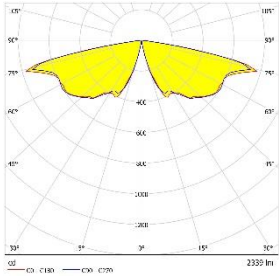
Mounting Height: 4,5m  
Distance to roadway: 0,5m  
Width of roadway: 4,5m  
Width of walkway: 1,5m



# LEVO3

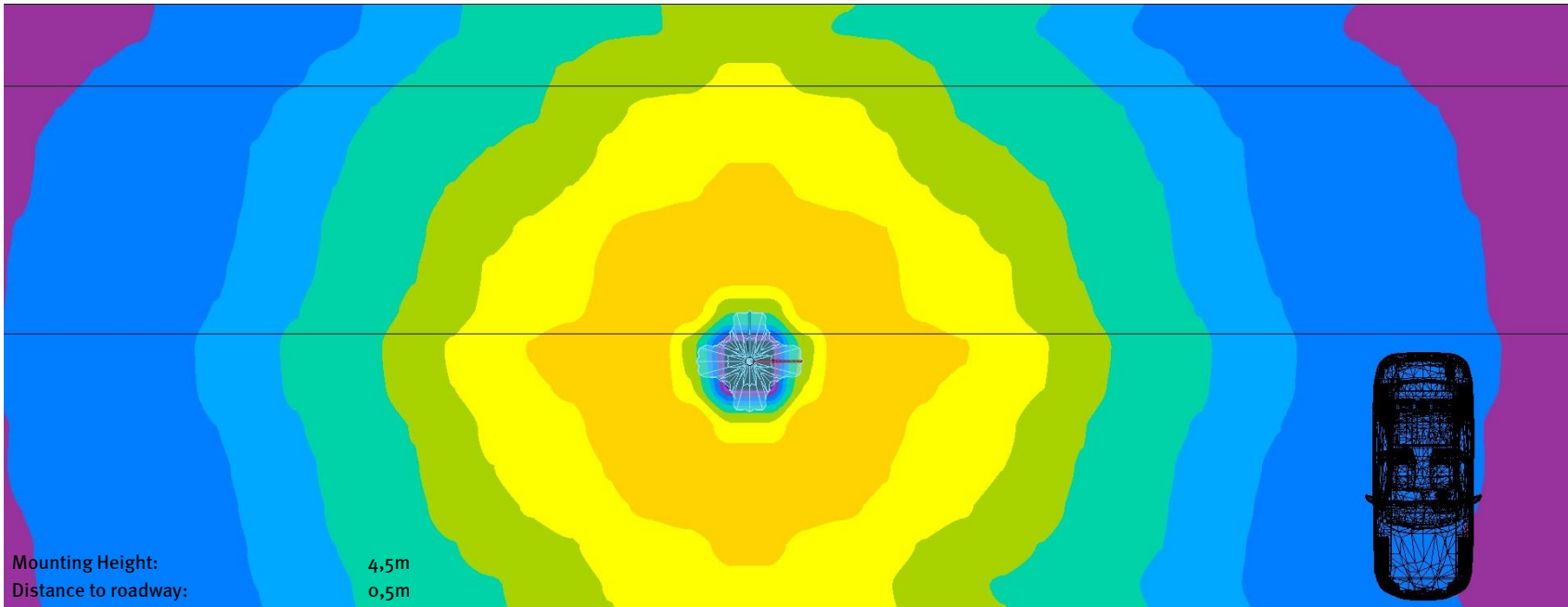
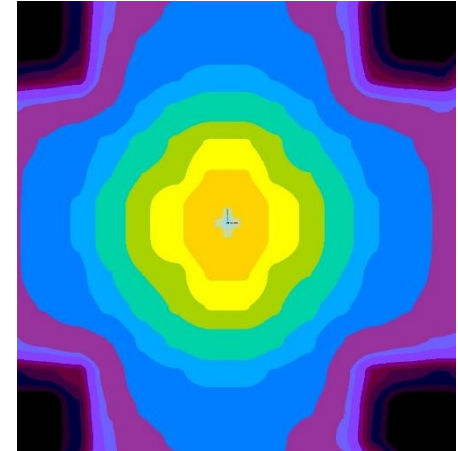
## Optics Overview | Pole Top Mounted Luminaires

### LEVO3 O8



**Light distribution:**  
Rotationally symmetric

**Characteristic:**  
For place illumination

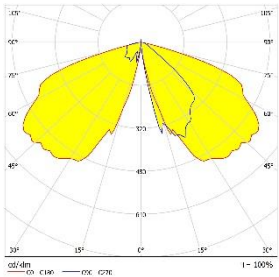


Mounting Height: 4,5m  
Distance to roadway: 0,5m  
Width of roadway: 4,5m  
Width of walkway: 1,5m & 5,0m



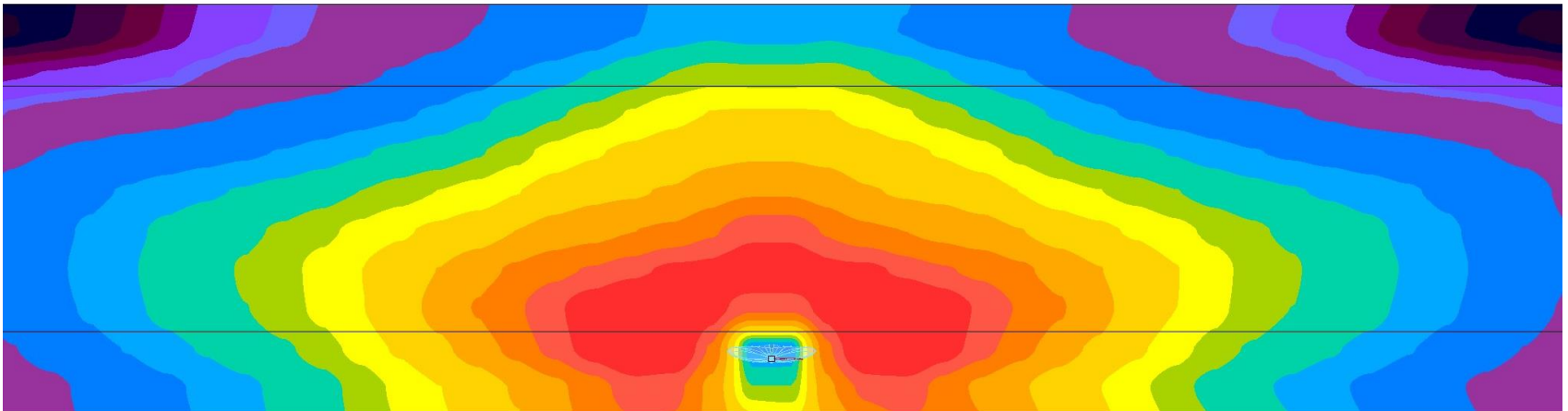
LEVO3 O17

Flux-Code CIE Nr. 3>95 %

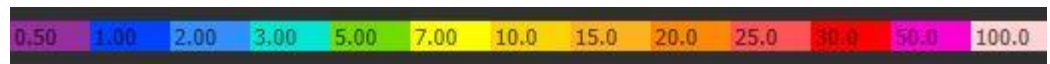


**Light distribution:**  
Asymmetrical wide

**Characteristic:**  
For main and residential road illumination



Mounting Height: 4,5m  
Distance to roadway: 0,5m  
Width of roadway: 4,5m  
Width of walkway: 1,5m

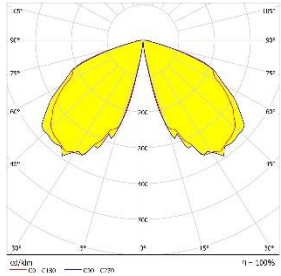


# LEVO3

## Optics Overview | Pole Top Mounted Luminaires

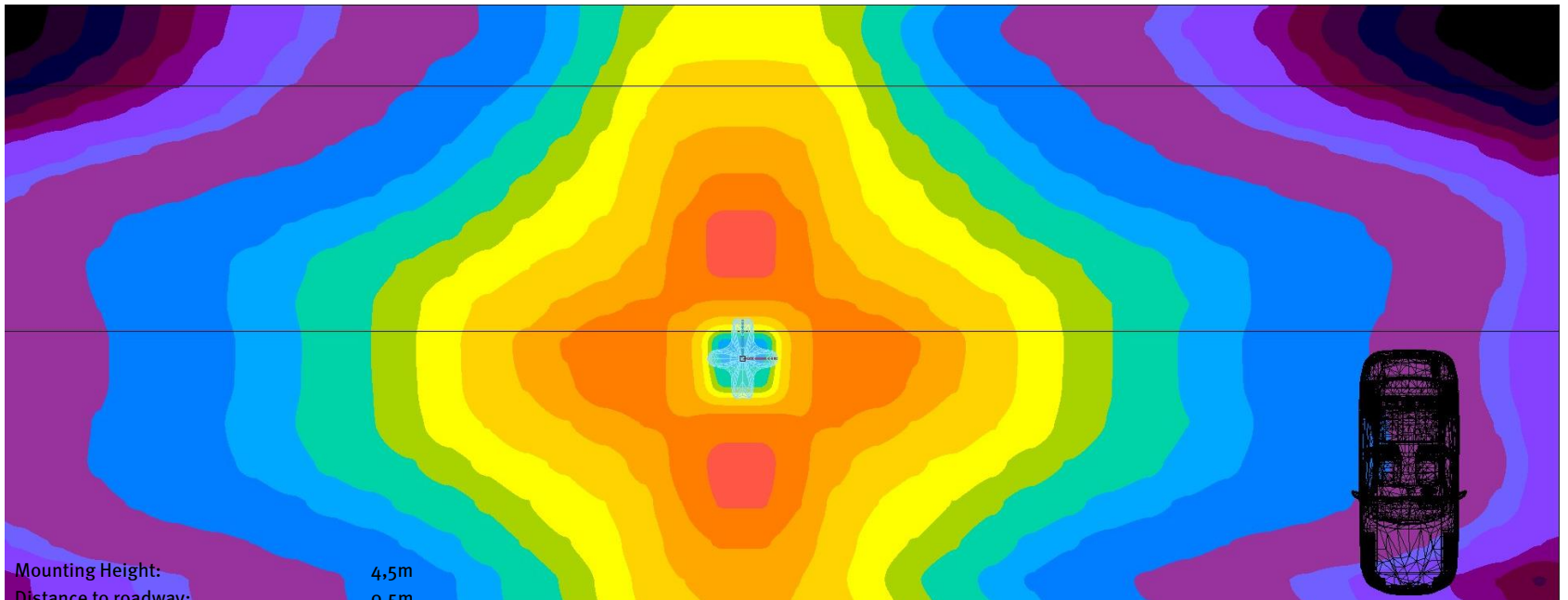
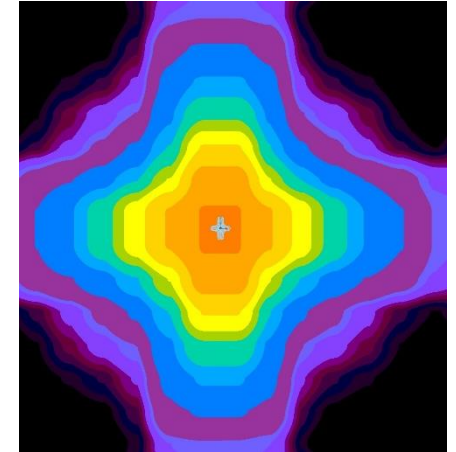
LEVO3 O18

Flux-Code CIE Nr. 3>95 %



**Light distribution:**  
Rotationally symmetric

**Characteristic:**  
For place illumination



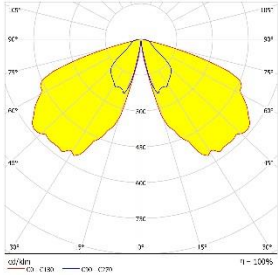
Mounting Height: 4,5m  
Distance to roadway: 0,5m  
Width of roadway: 4,5m  
Width of walkway: 1,5m & 5,0m





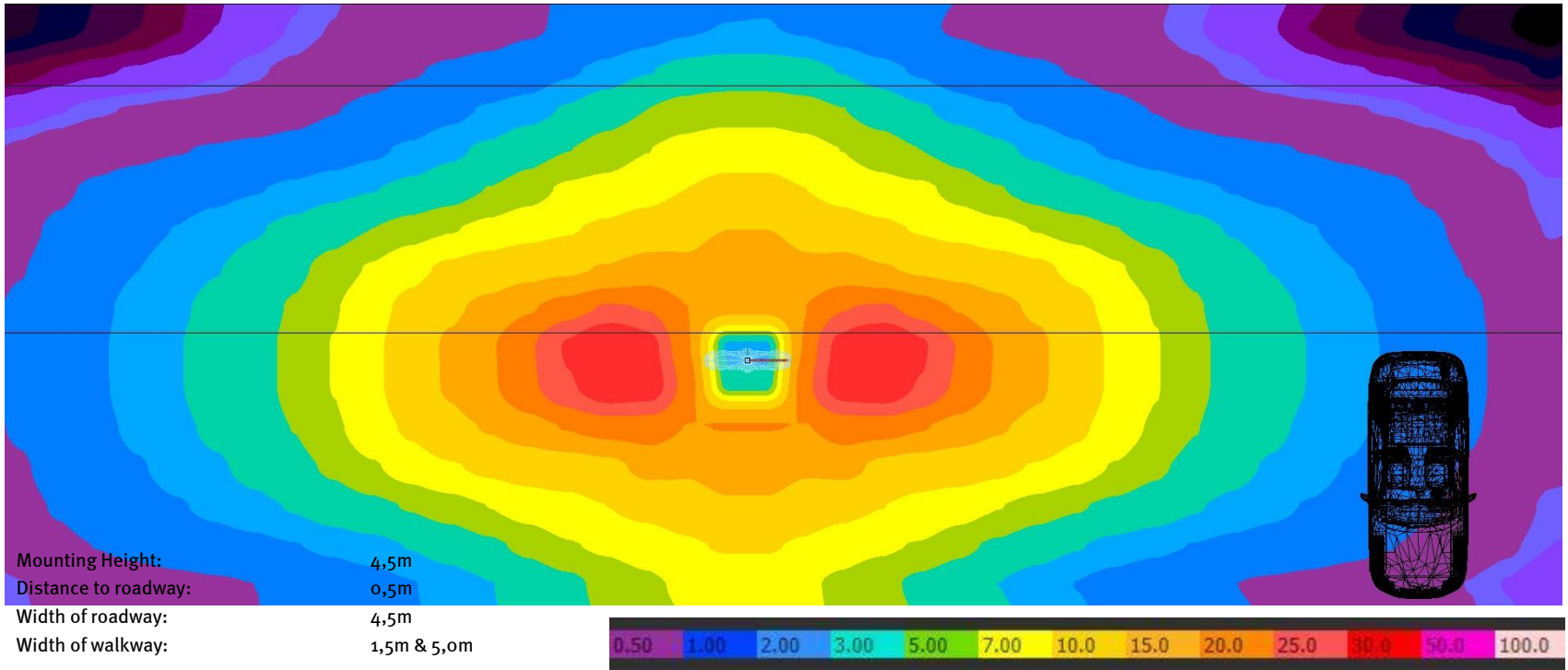
## LEVO3 O19

Flux-Code CIE Nr. 3 >95 %



**Light distribution:**  
Axially symmetric wide

**Characteristic:**  
For main road illumination



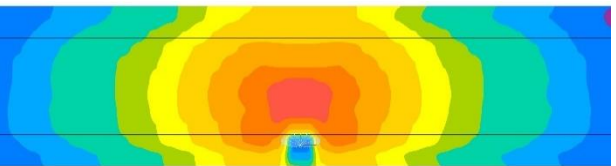
# LEVO3

## Optics Overview | Pole Top Mounted Luminaires

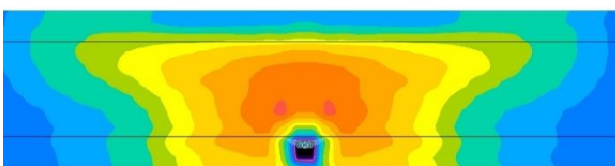
LEVO3 01



LEVO3 02



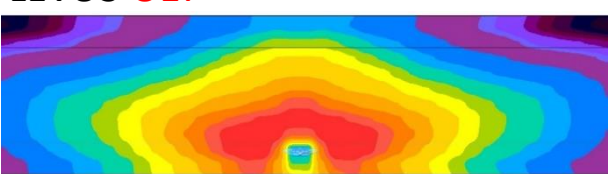
LEVO3 03



LEVO3 07

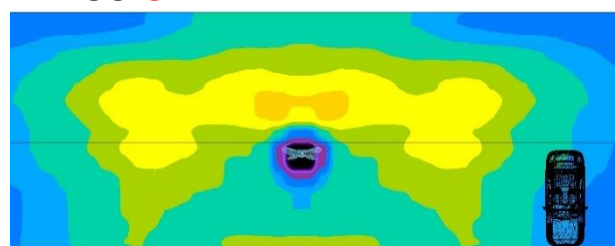


LEVO3 017

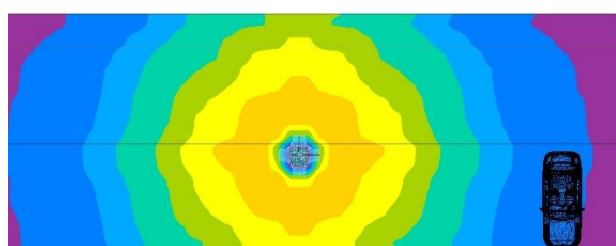


Mounting Height: 4,5m  
Distance to roadway: 0,5m  
Width of roadway: 4,5m  
Width of walkway: 1,5m

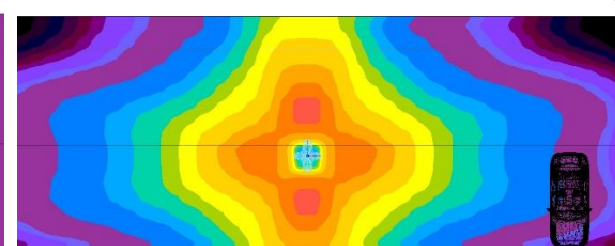
LEVO3 04



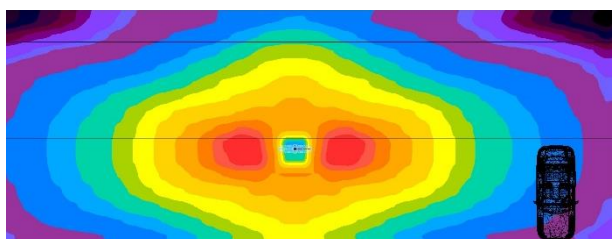
LEVO3 08



LEVO3 018



LEVO3 019



Mounting Height: 4,5m  
Distance to roadway: 0,5m  
Width of roadway: 4,5m  
Width of walkway: 1,5m & 5,0m





# LEVO<sub>3</sub> HP

---

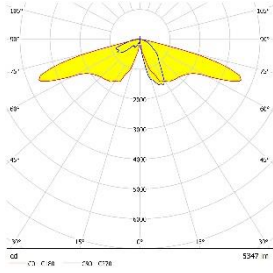
Optics Overview | Illuminating columns (CITY ELEMENTS AR & AA elements)

Mounting Height 6m

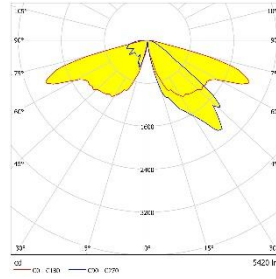
# LEVO3

## Optics Overview | Illuminating columns (CITY ELEMENTS AR elements)

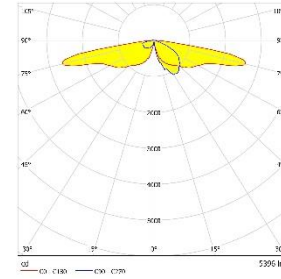
LEVO3 01



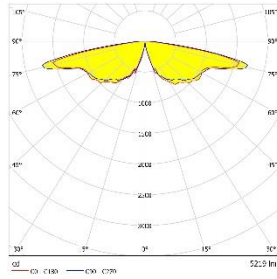
LEVO3 03



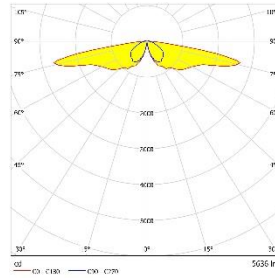
LEVO3 07



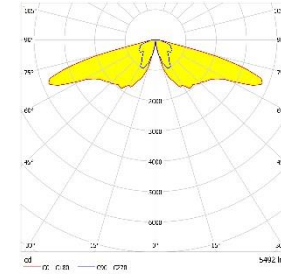
LEVO3 08



LEVO3 09



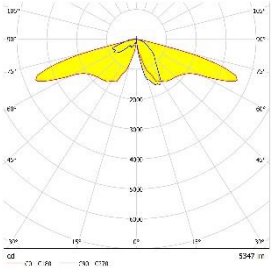
LEVO3 010



# LEVO3 HP

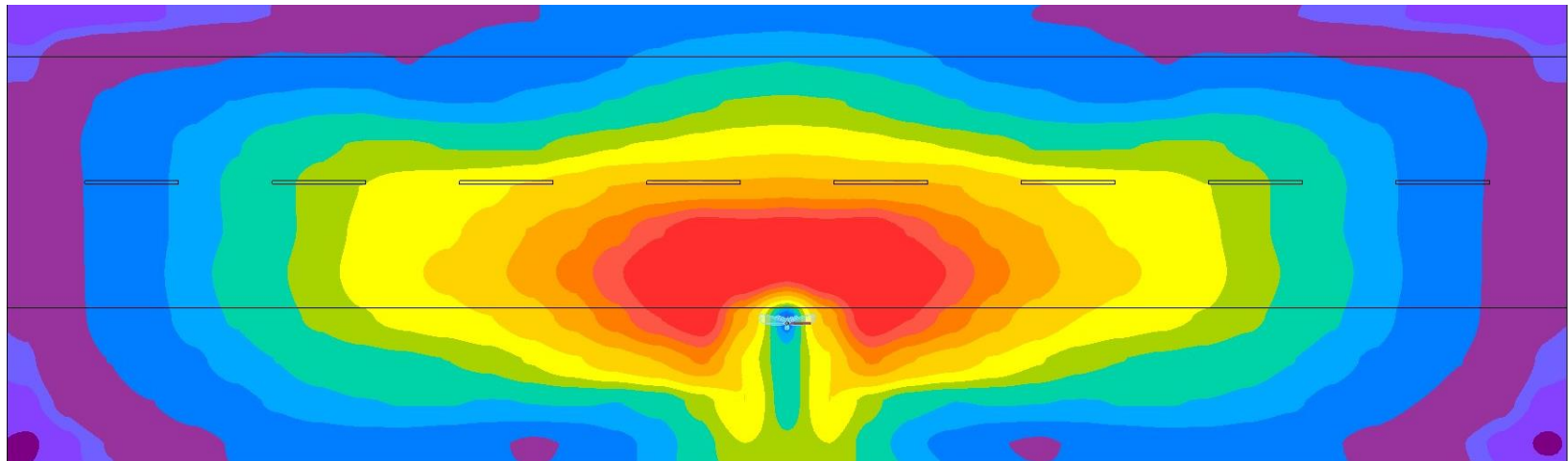
## Optics Overview | Illuminating columns (CITY ELEMENTS AR elements)

### LEVO3 O1

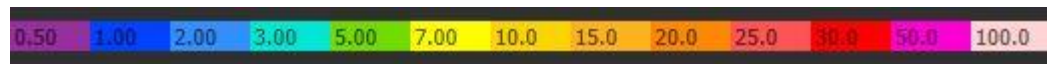


**Light distribution:**  
Asymmetrical,  
optimised for luminance

**Characteristic:**  
For main road illumination



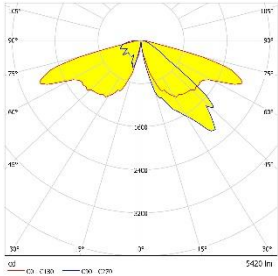
Mounting Height: 6,0m  
Distance to roadway: 0,5m  
Width of roadway: 8,0m  
Width of walkway: 2,0m & 5,0m



# LEVO3 HP

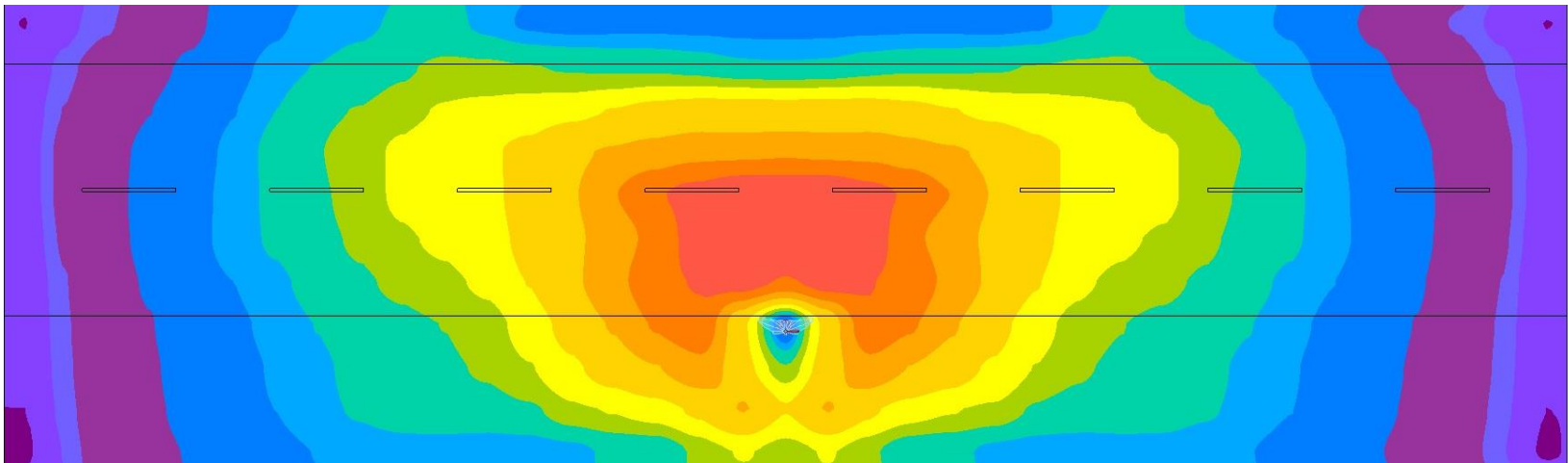
Optics Overview | Illuminating columns (CITY ELEMENTS AR elements)

## LEVO3 O3



**Light distribution:**  
Asymmetrical,  
optimised for illuminance

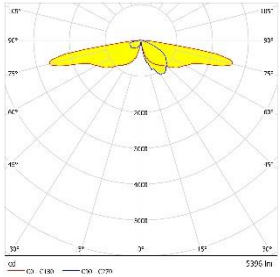
**Characteristic:**  
For main road illumination



Mounting Height: 6,0m  
Distance to roadway: 0,5m  
Width of roadway: 8,0m  
Width of walkway: 2,0m & 5,0m

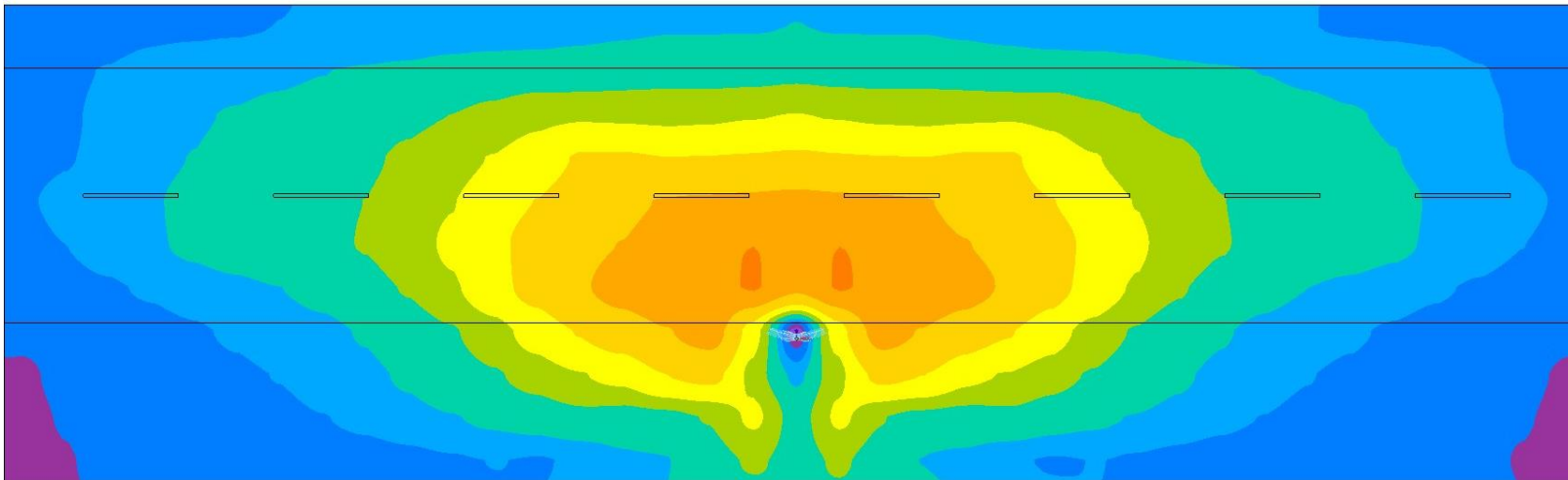


### LEVO3 07

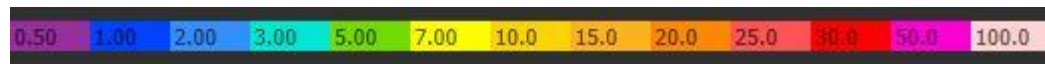


**Light distribution:**  
Asymmetrical wide for luminance  
of up to 0,5 cd/m<sup>2</sup>

**Characteristic:**  
For main and residential road  
illumination



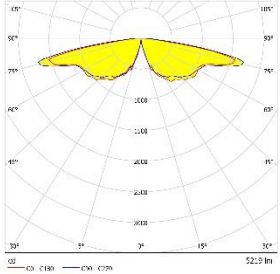
Mounting Height: 6,0m  
Distance to roadway: 0,5m  
Width of roadway: 8,0m  
Width of walkway: 2,0m & 5,0m



# LEVO3 HP

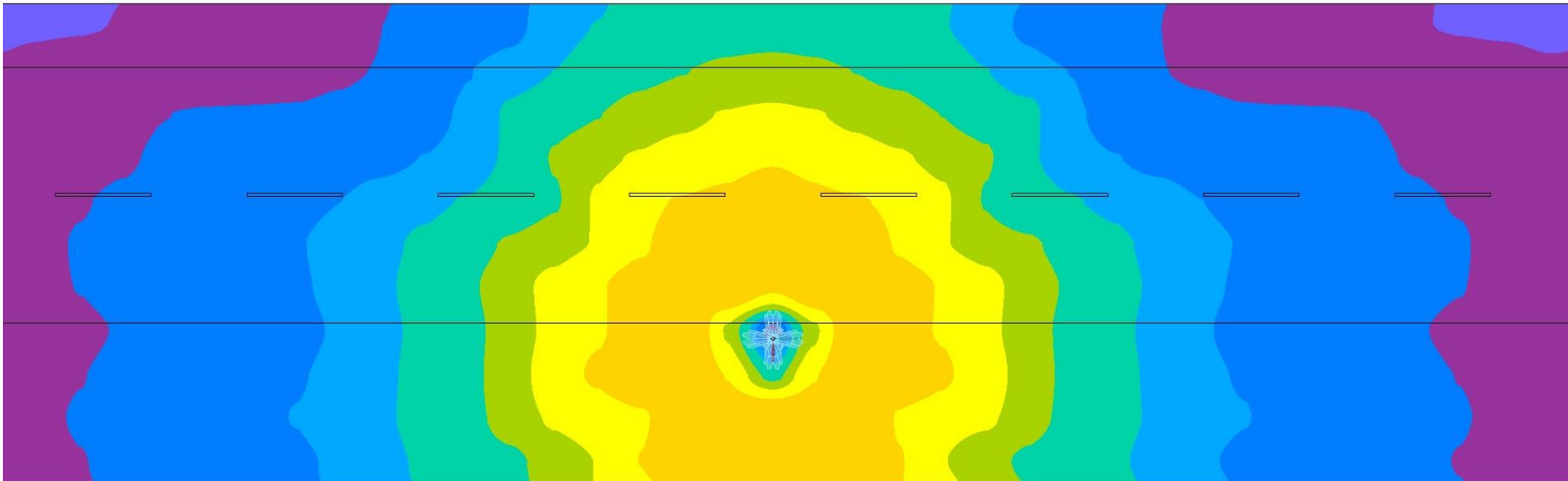
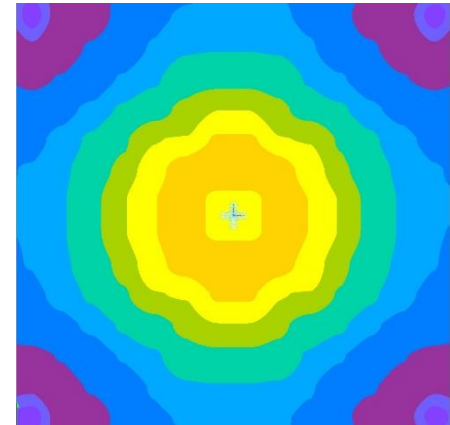
## Optics Overview | Illuminating columns (CITY ELEMENTS AR elements)

### LEVO3 O8

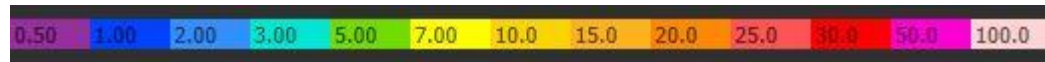


**Light distribution:**  
Rotationally symmetric

**Characteristic:**  
For place illumination



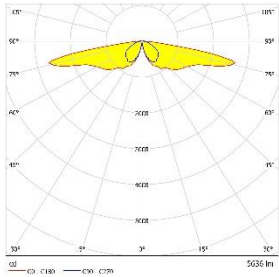
Mounting Height: 6,0m  
Distance to roadway: 0,5m  
Width of roadway: 8,0m  
Width of walkway: 2,0m & 5,0m



# LEVO3 HP

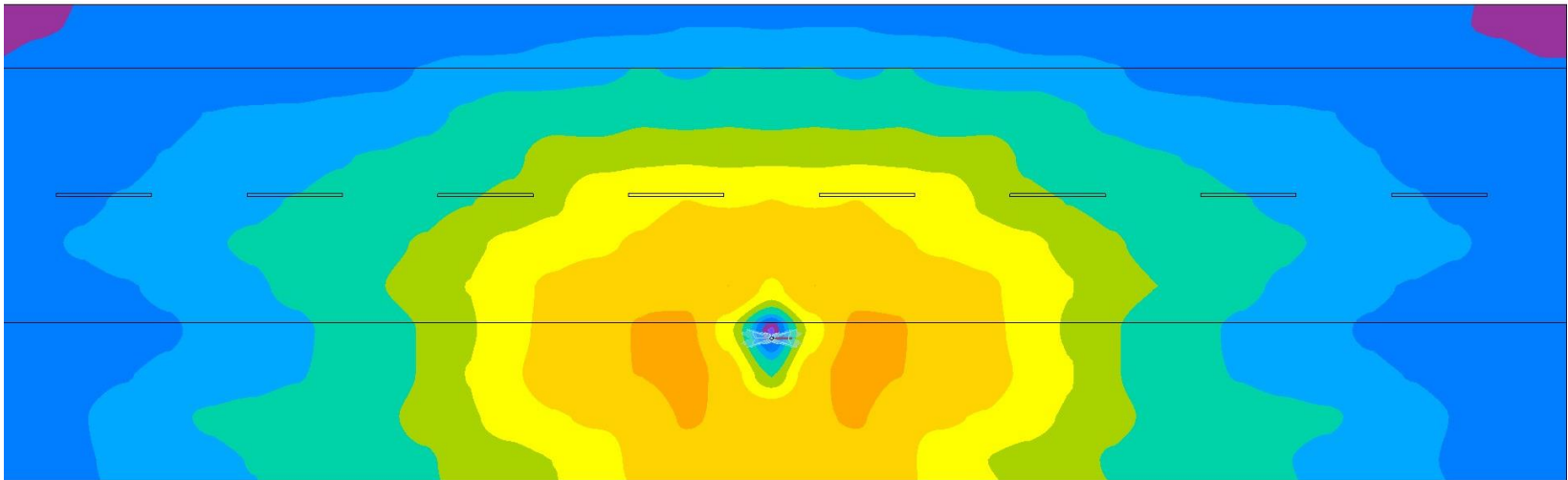
Optics Overview | Illuminating columns (CITY ELEMENTS AR elements)

## LEVO3 09



**Light distribution:**  
Axially symmetrical

**Characteristic:**  
For main road or pedestrian zone illumination

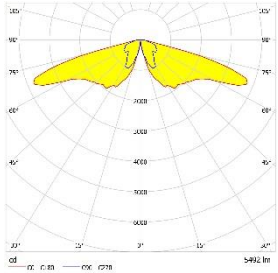


Mounting Height: 6,0m  
Distance to roadway: 0,5m  
Width of roadway: 8,0m  
Width of walkway: 2,0m & 5,0m



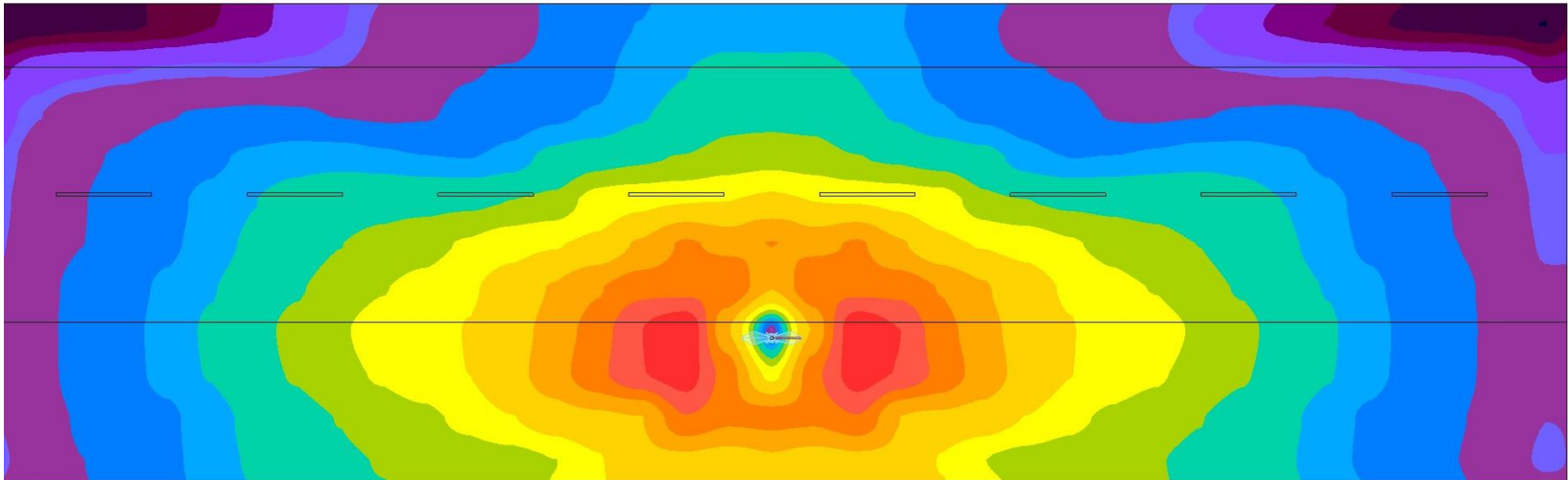


### LEVO3 O10



**Light distribution:**  
Axially symmetric wide

**Characteristic:**  
For main road illumination

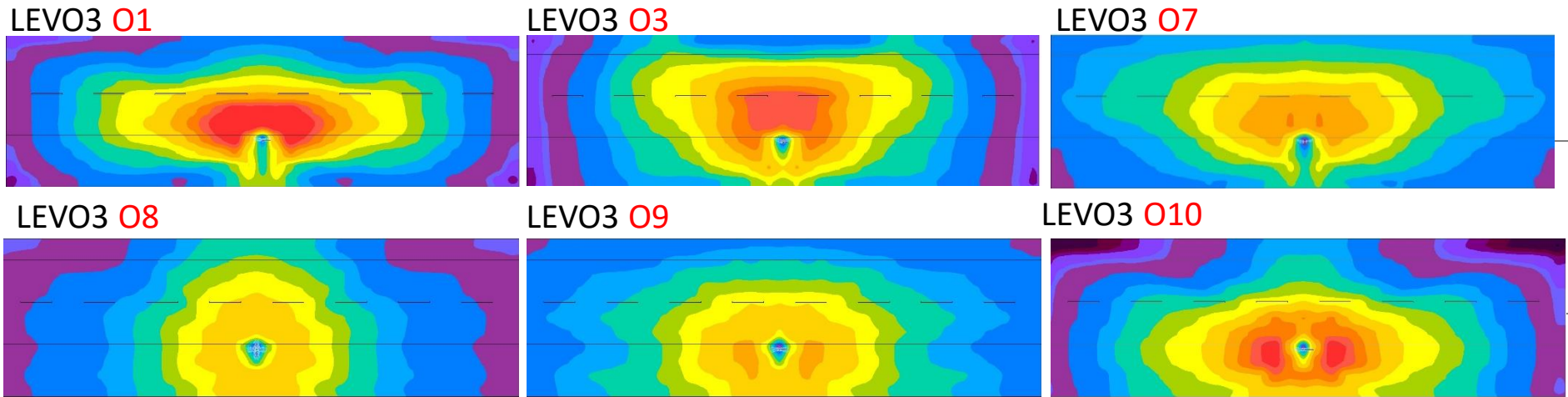


Mounting Height: 6,0m  
Distance to roadway: 0,5m  
Width of roadway: 8,0m  
Width of walkway: 2,0m & 5,0m

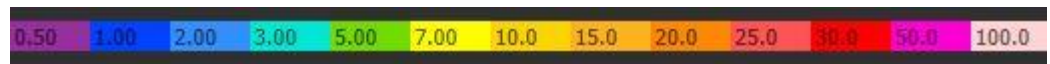


# LEVO3 HP

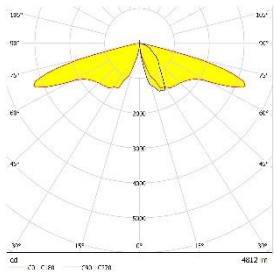
Optics Overview | Illuminating columns (CITY ELEMENTS AR elements)



Mounting Height: 6,0m  
Distance to roadway: 0,5m  
Width of roadway: 8,0m  
Width of walkway: 2,0m & 5,0m

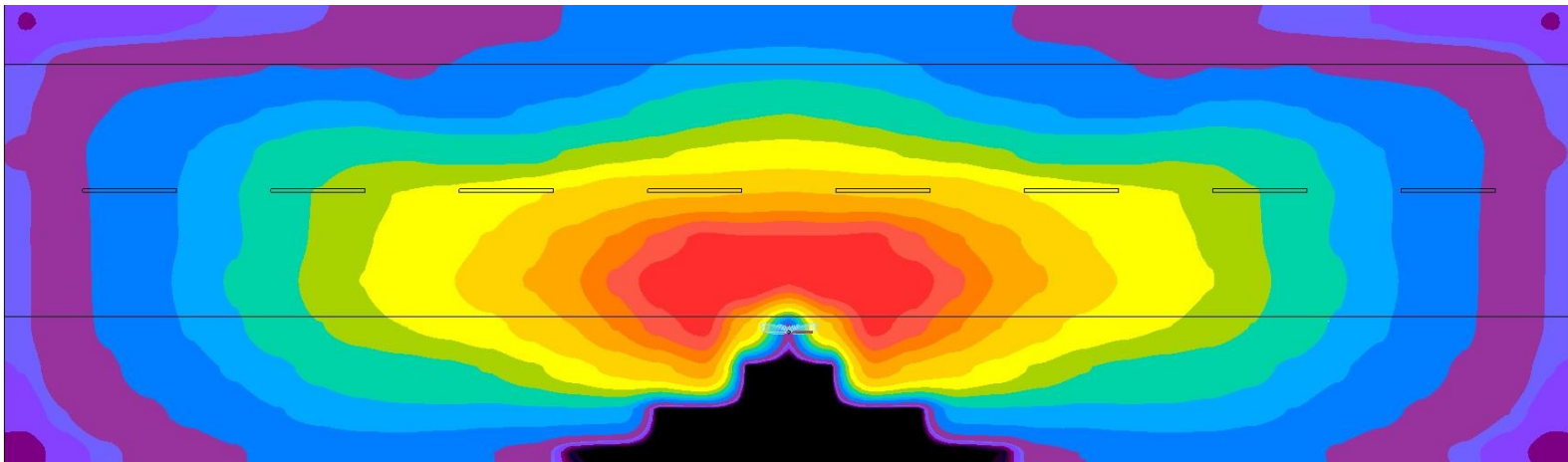


### LEVO3 O1

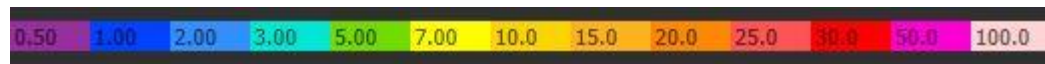


**Lichtverteilung:**  
Asymmetrisch,  
optimiert für Leuchtdichte

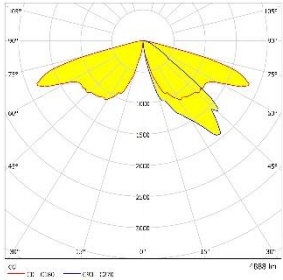
**Charakteristik:**  
Zur Beleuchtung von  
Hauptverkehrsstraßen



Mounting Height: 6,0m  
Distance to roadway: 0,5m  
Width of roadway: 8,0m  
Width of walkway: 2,0m & 5,0m

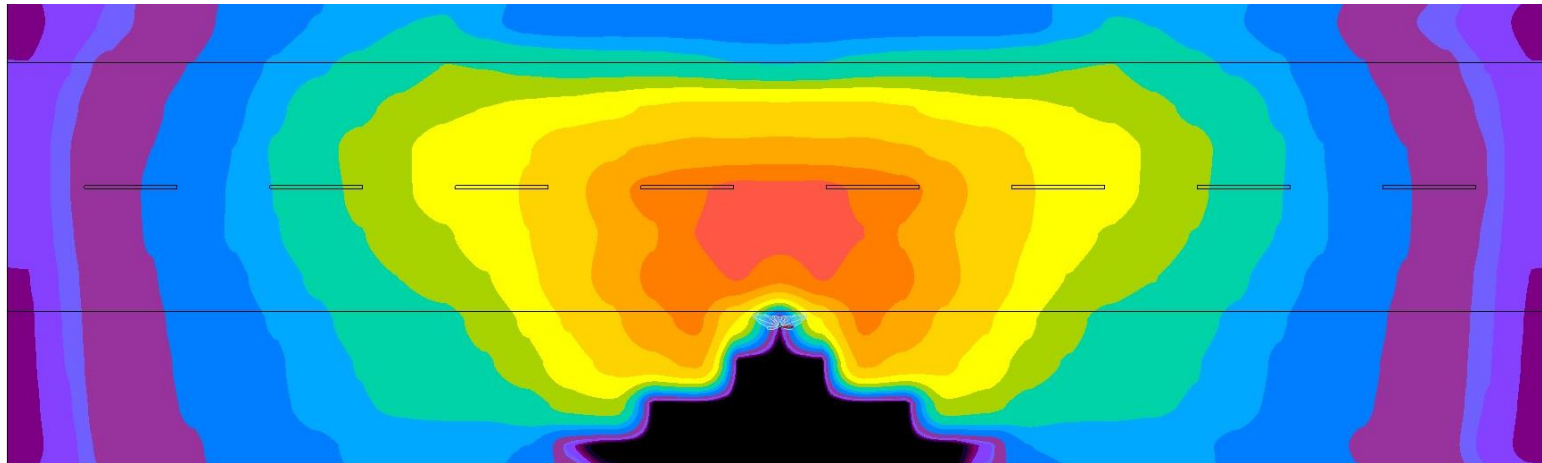


### LEVO3 O3

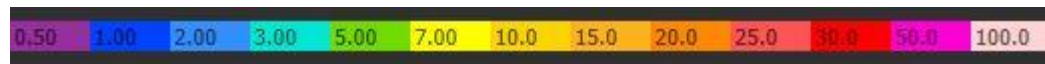


**Lichtverteilung:**  
Asymmetrisch,  
optimiert für Leuchtdichte

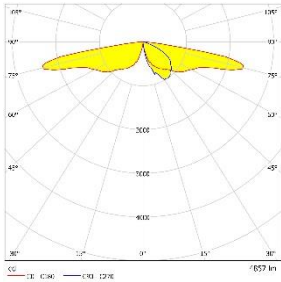
**Charakteristik:**  
Zur Beleuchtung von  
Hauptverkehrsstraßen



Mounting Height: 6,0m  
Distance to roadway: 0,5m  
Width of roadway: 8,0m  
Width of walkway: 2,0m & 5,0m

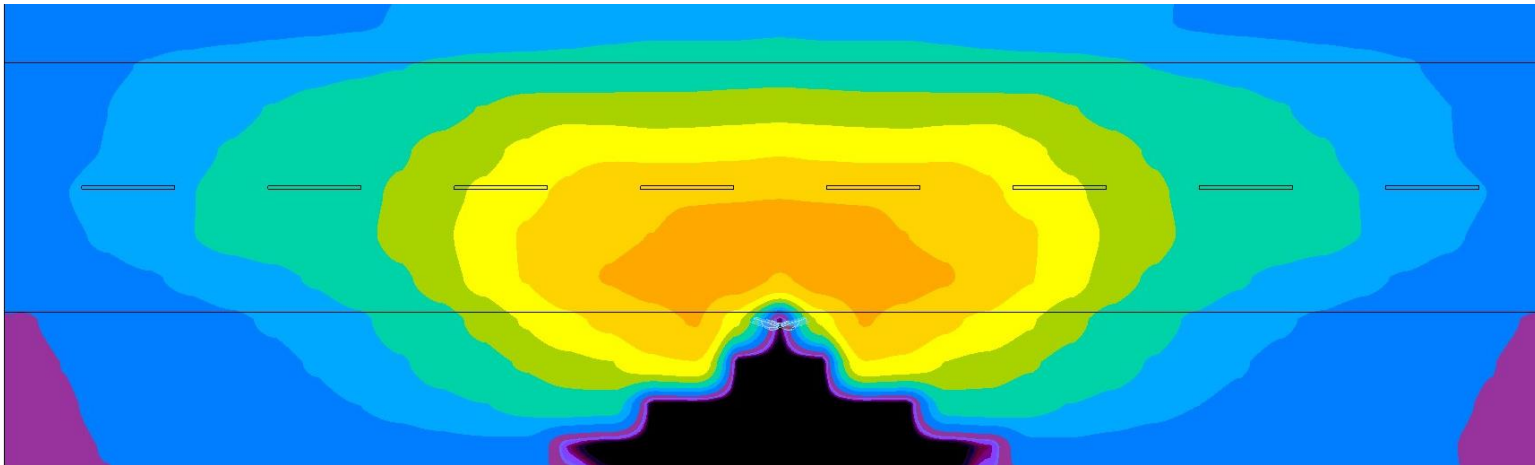


### LEVO3 07



**Lichtverteilung:**  
Asymmetrisch,  
optimiert für Leuchtdichte

**Charakteristik:**  
Zur Beleuchtung von  
Hauptverkehrsstraßen



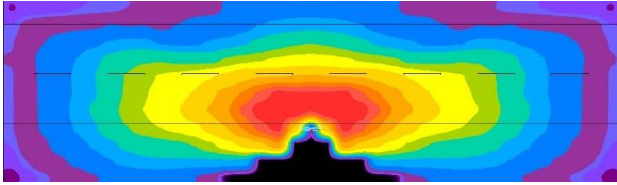
Mounting Height: 6,0m  
Distance to roadway: 0,5m  
Width of roadway: 8,0m  
Width of walkway: 2,0m & 5,0m



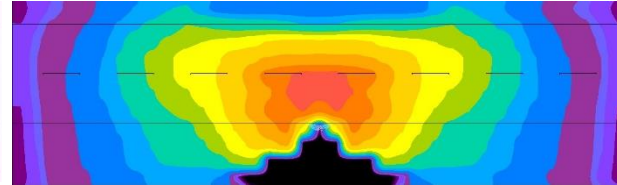
# LEVO3 HP

Optics Overview | Illuminating columns (CITY ELEMENTS AA elements)

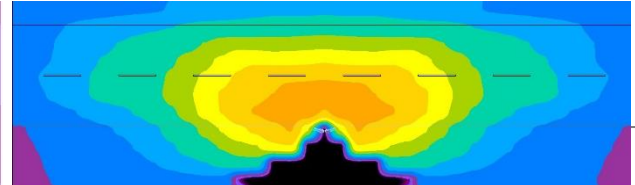
LEVO3 01



LEVO3 03



LEVO3 07

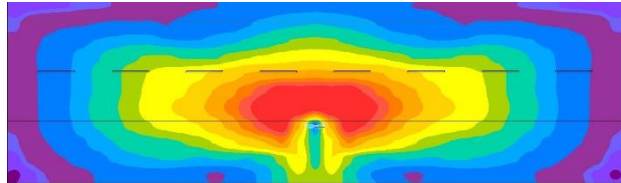


Mounting Height: 6,0m  
Distance to roadway: 0,5m  
Width of roadway: 8,0m  
Width of walkway: 2,0m & 5,0m

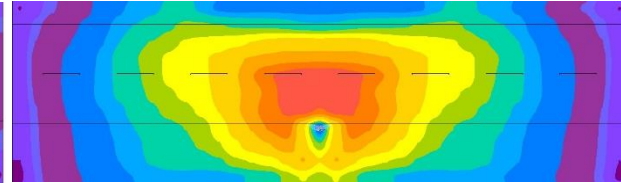




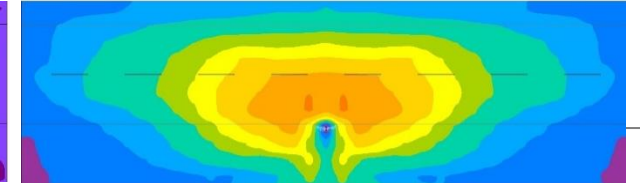
LEVO3 O1 AR



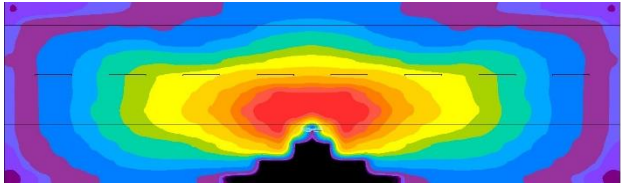
LEVO3 O3 AR



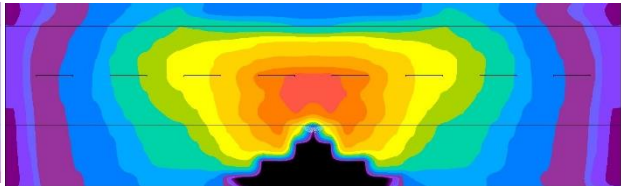
LEVO3 O7 AR



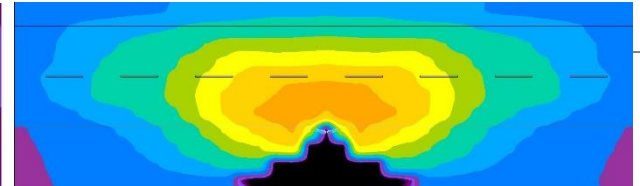
LEVO3 O1 AA



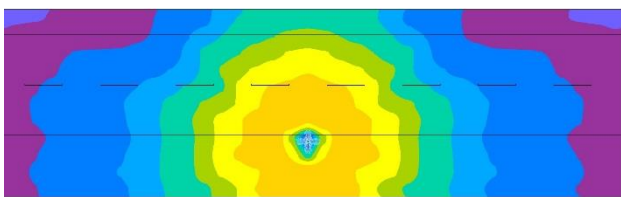
LEVO3 O3 AA



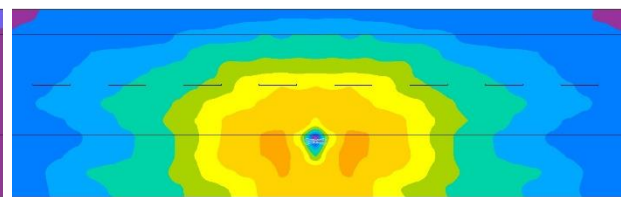
LEVO3 O7 AA



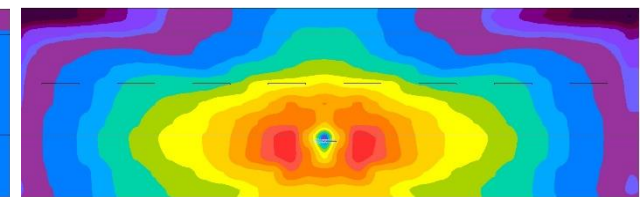
LEVO3 O8 AR



LEVO3 O9 AR



LEVO3 O10 AR



Mounting Height: 6,0m  
Distance to roadway: 0,5m  
Width of roadway: 8,0m  
Width of walkway: 2,0m & 5,0m





# LEVO<sub>3</sub>

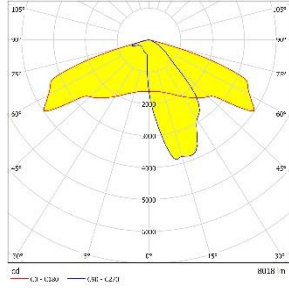
---

Optics Overview | Bracket Mounted Luminaires  
Mounting Height 6m

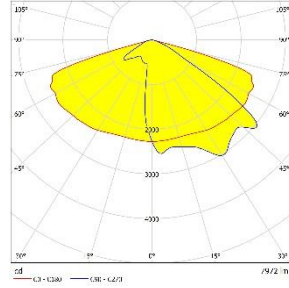
# LEVO3

## Optics Overview | Bracket Mounted Luminaires

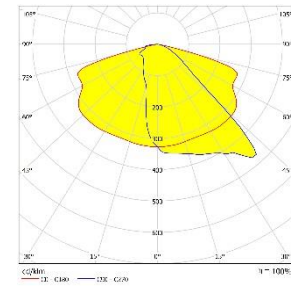
LEVO3 O1



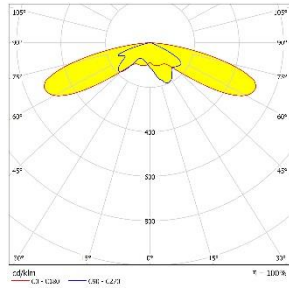
LEVO3 O2



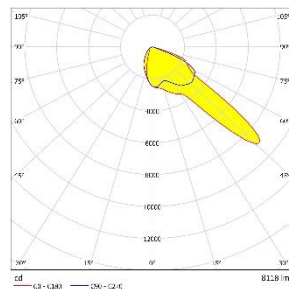
LEVO3 O3



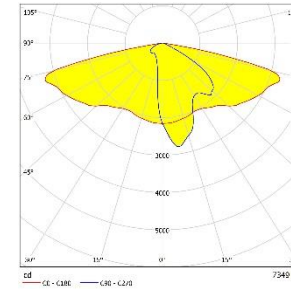
LEVO3 O4



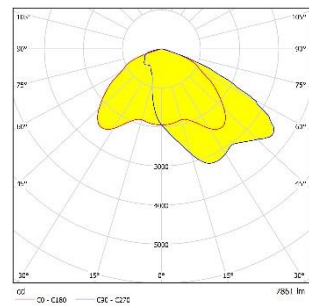
LEVO3 O6R



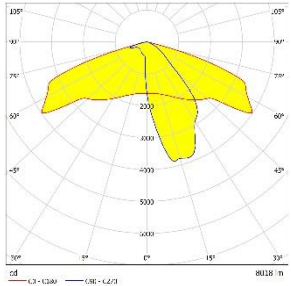
LEVO3 O7



LEVO3 O14

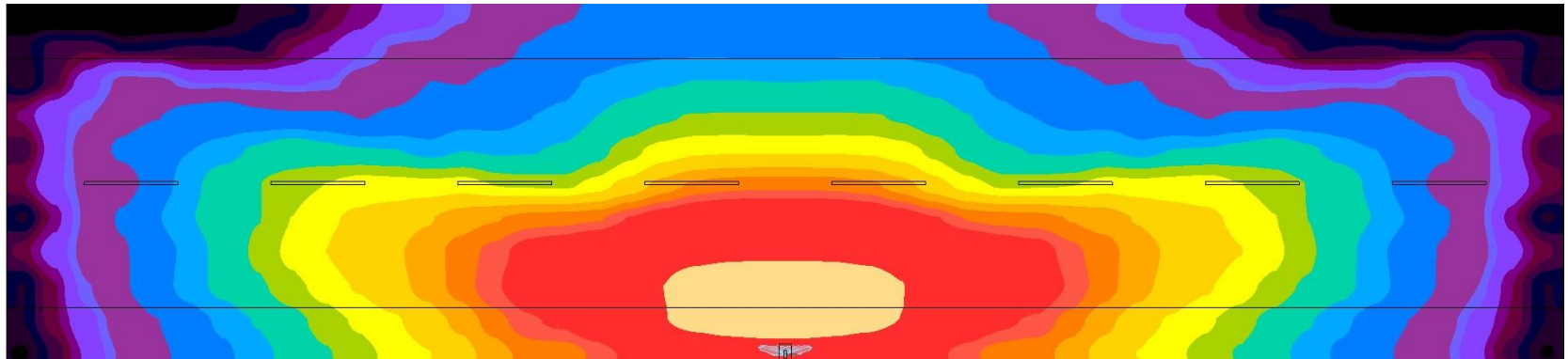


## LEVO3 01



**Light distribution:**  
Asymmetrical,  
optimised for luminance

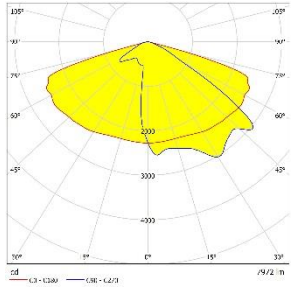
**Characteristic:**  
For main road illumination



Mounting Height: 6,0m  
Tilt: 0°  
Distance to roadway: 2,0m  
Width of roadway: 8,0m  
Width of walkway: 2,0m

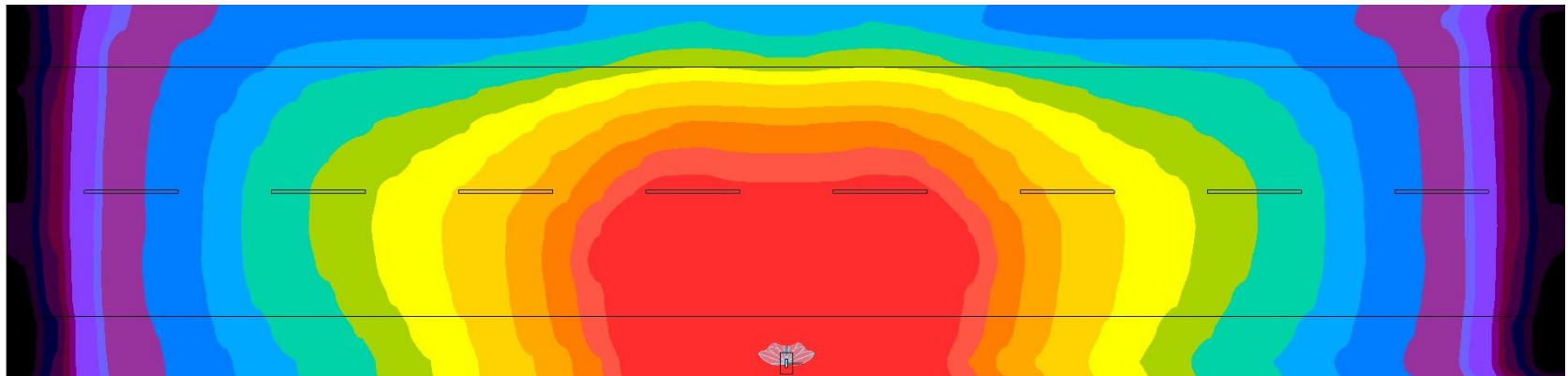


## LEVO3 O2

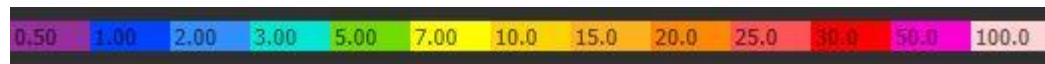


**Lichtverteilung:**  
Asymmetrisch, optimiert  
für Beleuchtungsstärke

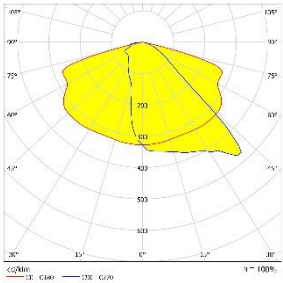
**Charakteristik:**  
Zur Beleuchtung von  
Hauptverkehrsstraßen



Mounting Height: 6,0m  
Tilt: 0°  
Distance to roadway: 2,0m  
Width of roadway: 8,0m  
Width of walkway: 2,0m

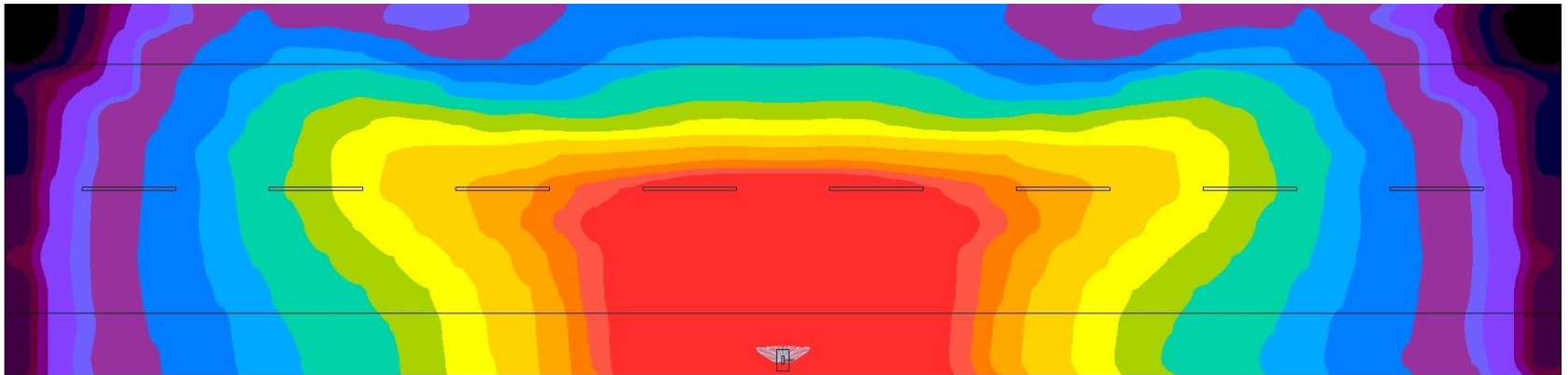


## LEVO3 O3



**Light distribution:**  
Asymmetrical,  
optimised for illuminance

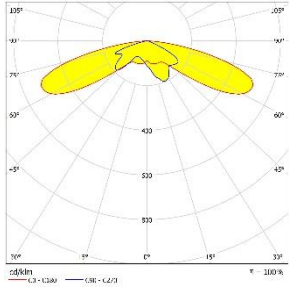
**Characteristic:**  
For main road illumination



Mounting Height: 6,0m  
Tilt: 0°  
Distance to roadway: 2,0m  
Width of roadway: 8,0m  
Width of walkway: 2,0m

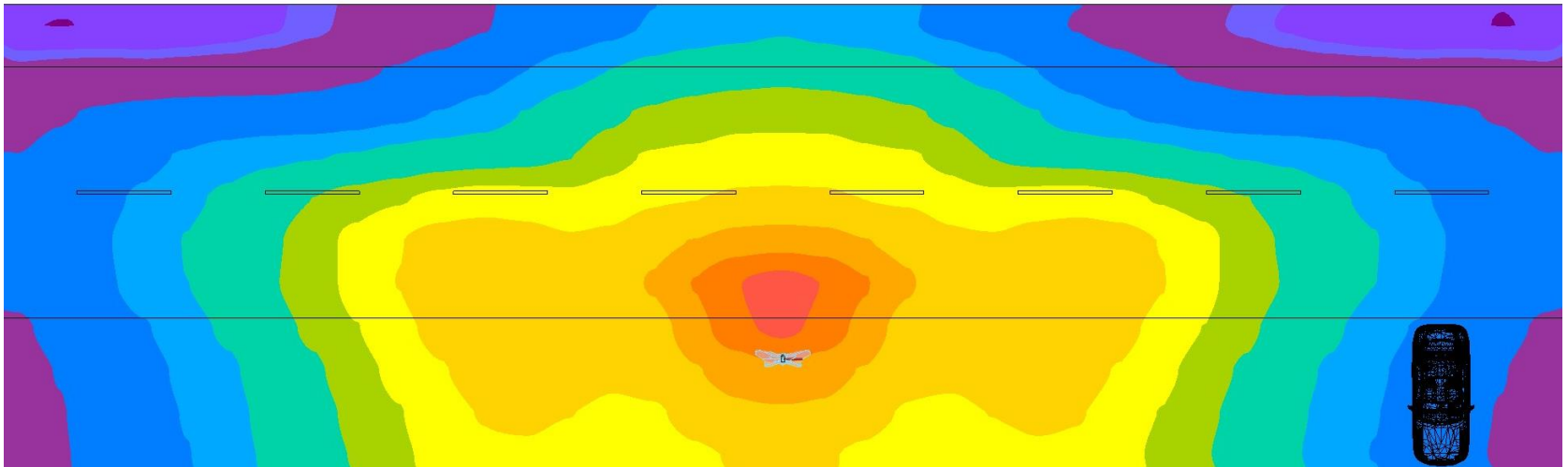


## LEVO3 04



**Light distribution:**  
Asymmetrical wide

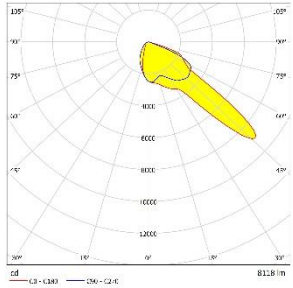
**Characteristic:**  
Characteristic: For foot and cycle path illumination



Mounting Height: 6,0m  
Tilt: 0°  
Distance to roadway: 2,0m  
Width of roadway: 8,0m  
Width of walkway: 2,0m & 5,0m

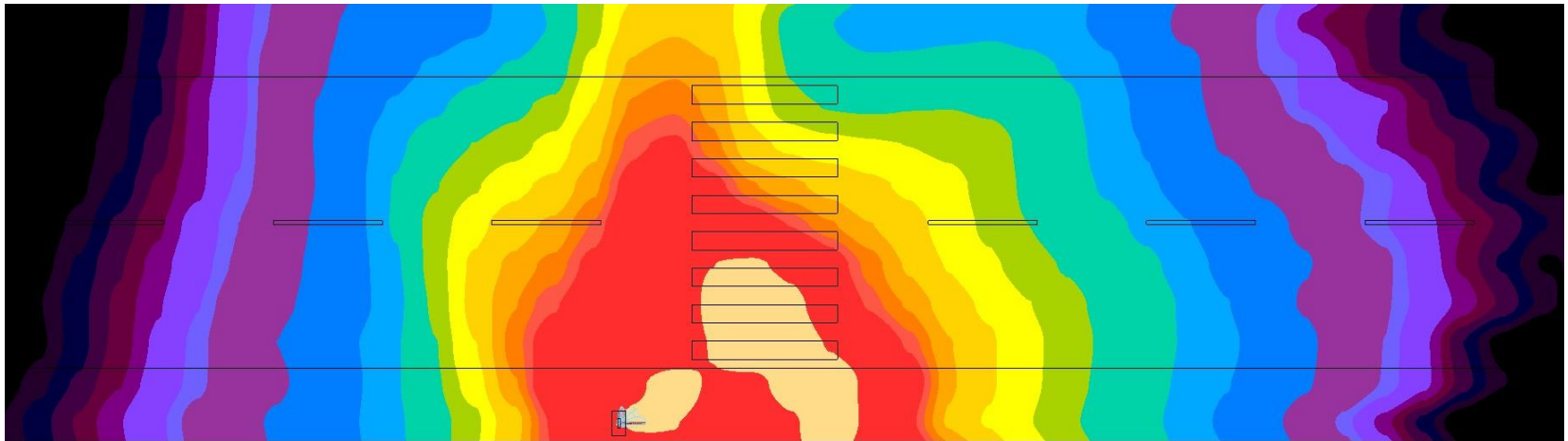


### LEVO3 O6R



**Light distribution:**  
Asymmetrical,  
right-oriented

**Characteristic:**  
For pedestrian crossing  
illumination

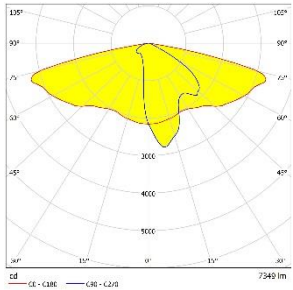


Mounting Height: 6,0m  
Tilt: 0°  
Distance to roadway: 2,0m  
Width of roadway: 8,0m  
Width of walkway: 2,0m



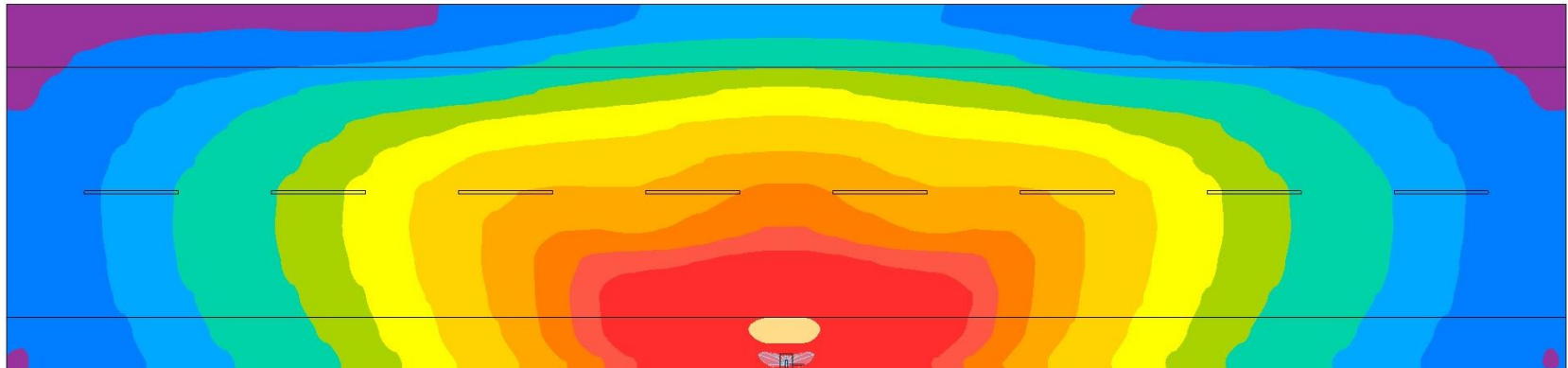


## LEVO3 07

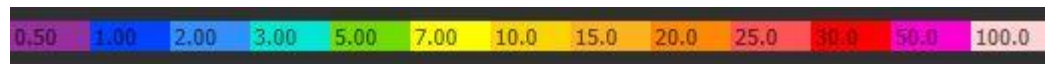


**Light distribution:**  
Asymmetrical wide for luminance  
of up to 0,5 cd/m<sup>2</sup>

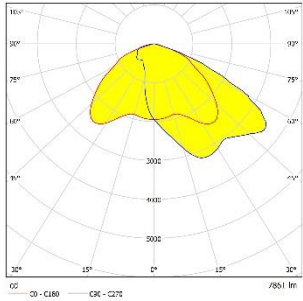
**Characteristic:**  
For main and residential road  
illumination



Mounting Height: 6,0m  
Tilt: 0°  
Distance to roadway: 2,0m  
Width of roadway: 8,0m  
Width of walkway: 2,0m

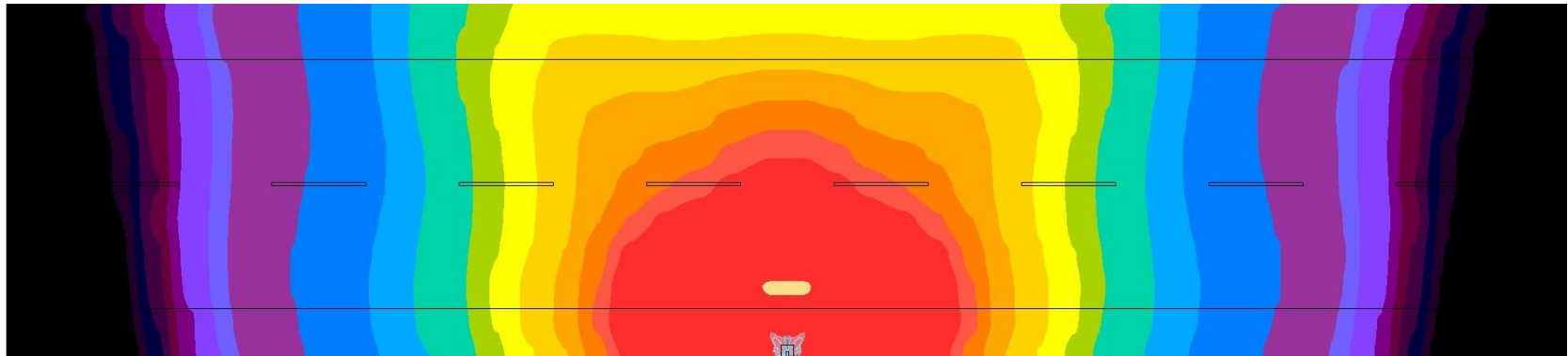


## LEVO3 O14

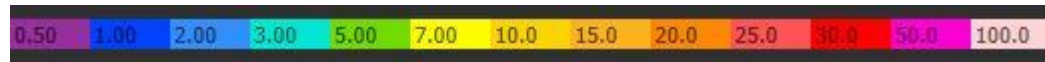


**Light distribution:**  
Asymmetric narrow distribution

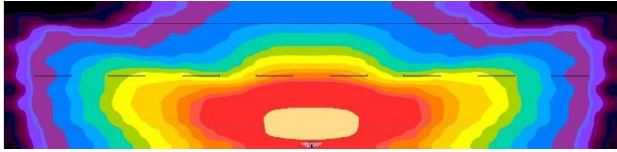
**Characteristic:**  
For the illumination of storage areas



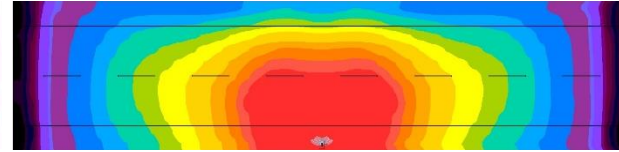
Mounting Height: 6,0m  
Tilt: 0°  
Distance to roadway: 2,0m  
Width of roadway: 8,0m  
Width of walkway: 2,0m



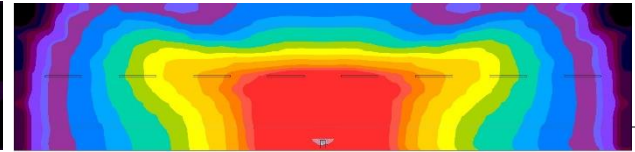
LEVO3 01



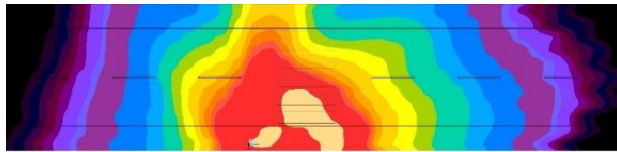
LEVO3 02



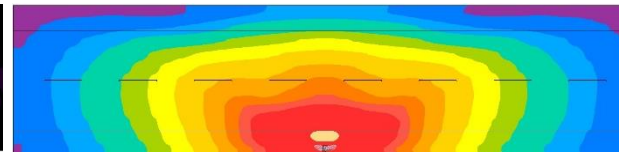
LEVO3 03



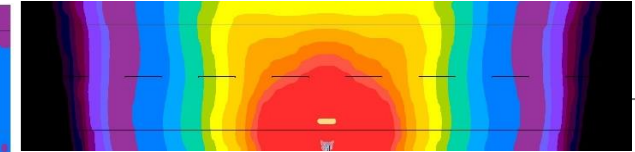
LEVO3 06R



LEVO3 07

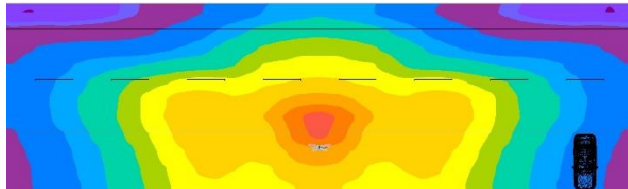


LEVO3 014



Mounting Height:	6,0m
Tilt:	0°
Distance to roadway:	2,0m
Width of roadway:	8,0m
Width of walkway:	2,0m

LEVO3 04



Mounting Height:	6,0m
Tilt:	0°
Distance to roadway:	2,0m
Width of roadway:	8,0m
Width of walkway:	2,0m & 5,0m



# LEVO<sub>3</sub>

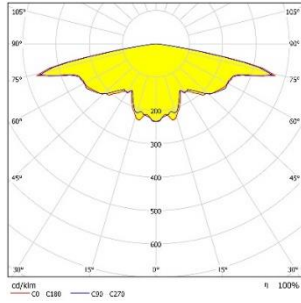
---

Optics Overview | Catenary Suspended Luminaires  
Mounting Height 8m

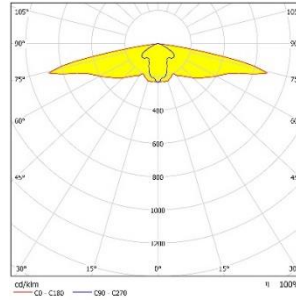
# LEVO3

## Optics Overview | Catenary Suspended Luminaires

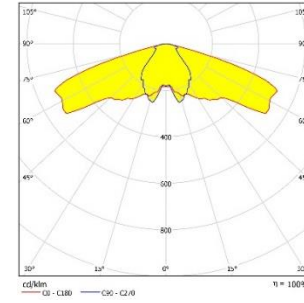
LEVO3 O8



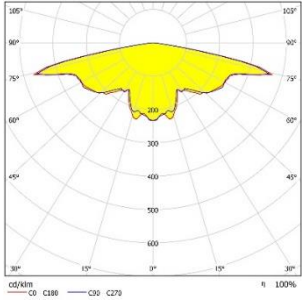
LEVO3 O9



LEVO3 O10

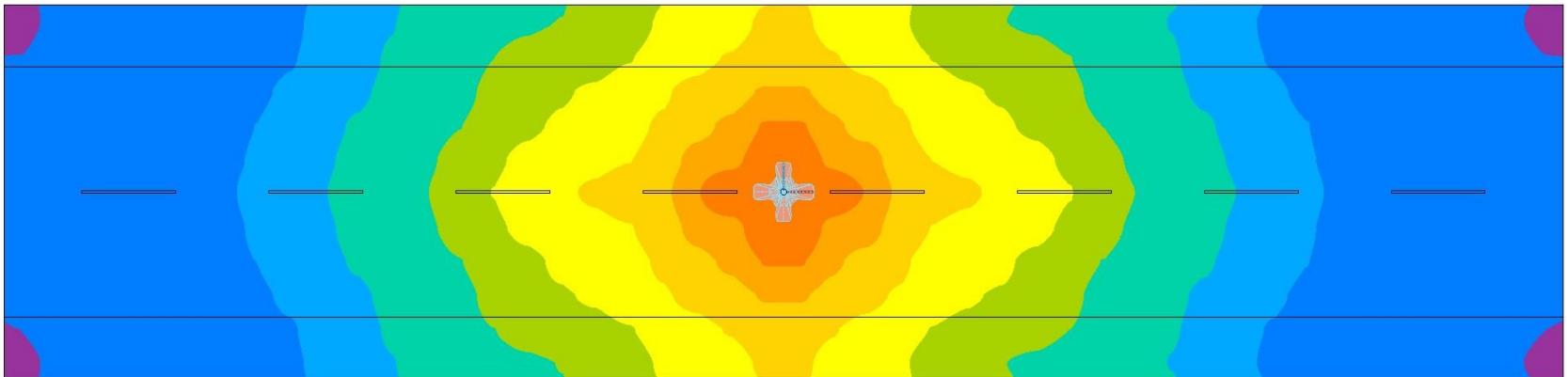
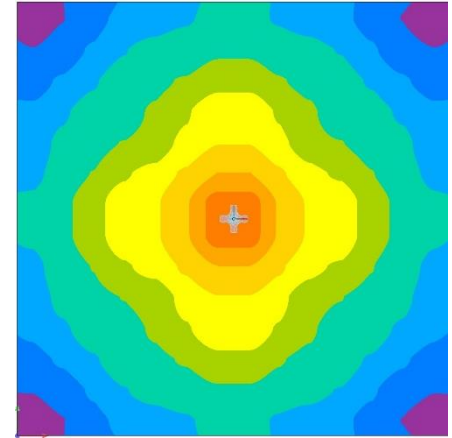


### LEVO3 O8

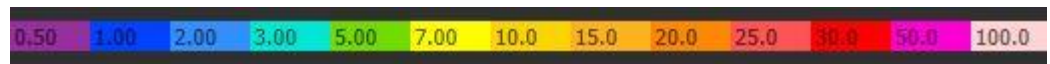


**Light distribution:**  
Rotationally symmetric

**Characteristic:**  
For place illumination

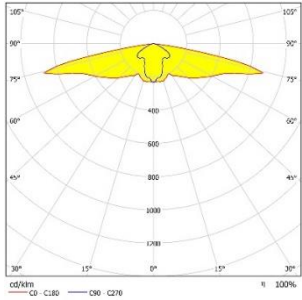


Mounting Height: 8,m  
Distance to roadway: middle  
Width of roadway: 8,0m  
Width of walkway: 2,0m



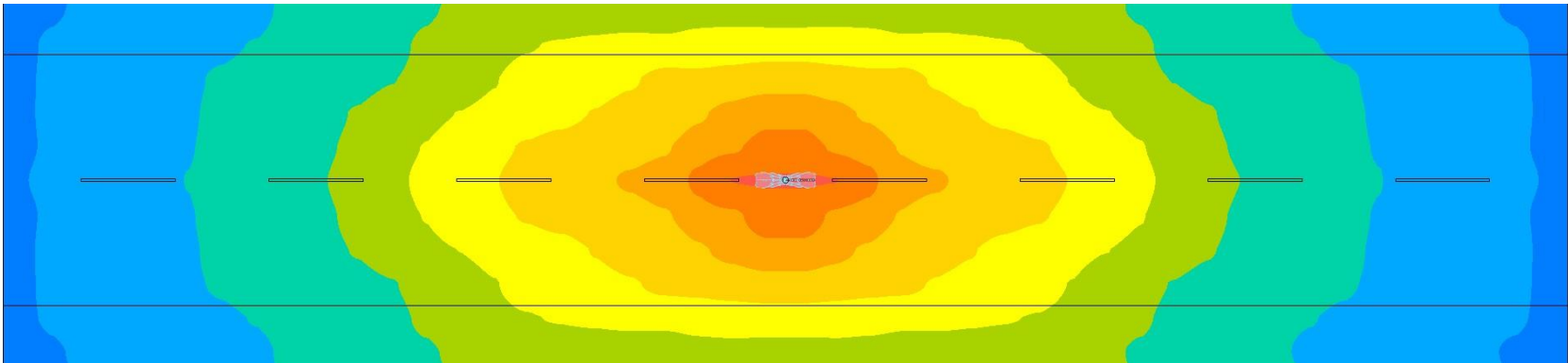
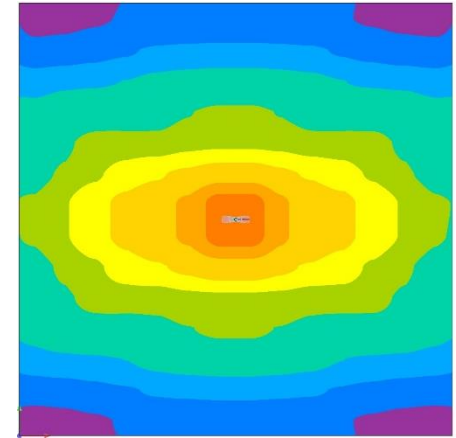


### LEVO3 09



**Light distribution:**  
Axially symmetrical

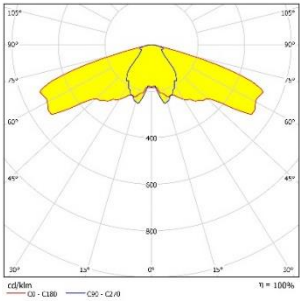
**Characteristic:**  
For main road illumination



Mounting Height: 8,m  
Distance to roadway: middle  
Width of roadway: 8,0m  
Width of walkway: 2,0m

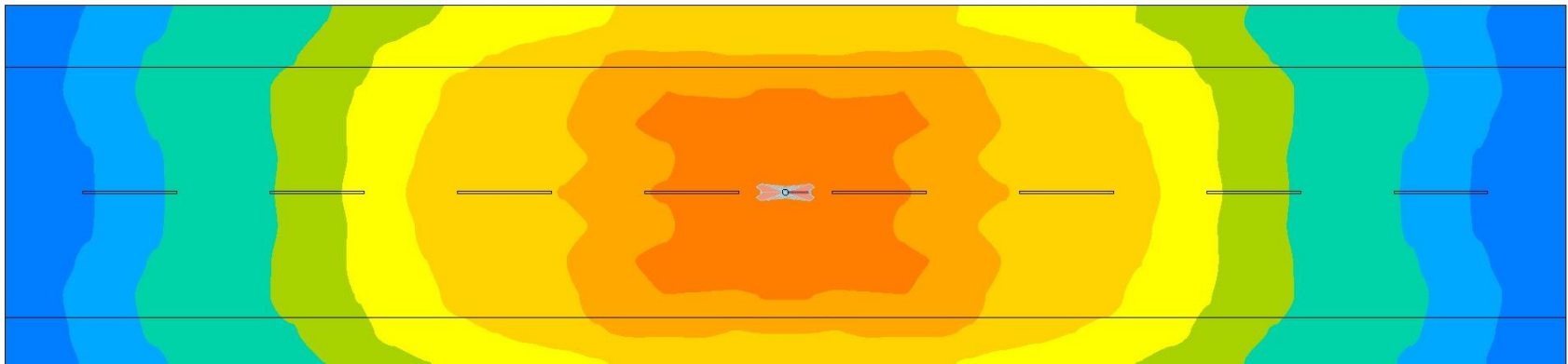
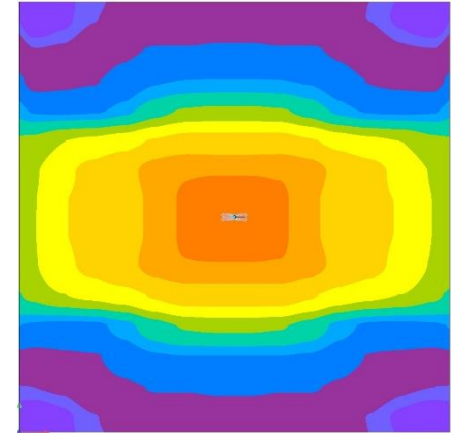


### LEVO3 O10

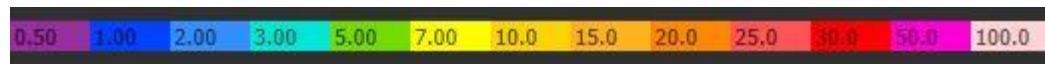


**Light distribution:**  
Axially symmetric wide

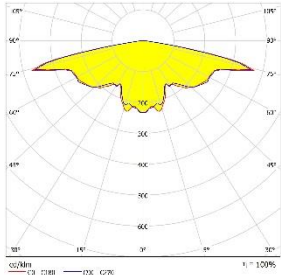
**Characteristic:**  
For main road illumination



Mounting Height: 8,m  
Distance to roadway: middle  
Width of roadway: 8,0m  
Width of walkway: 2,0m

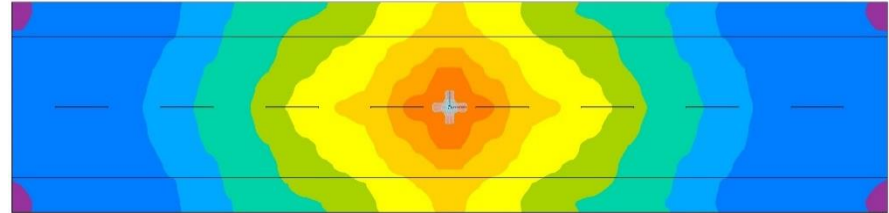


### LEVO3 O8

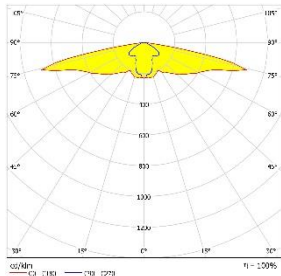


**Light distribution:**  
Rotationally symmetric

**Characteristic:**  
For place illumination

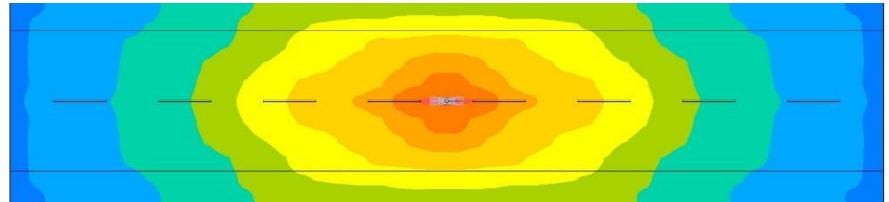


### LEVO3 O9

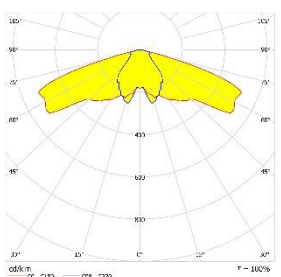


**Light distribution:**  
Axially symmetrical

**Characteristic:**  
For main road illumination

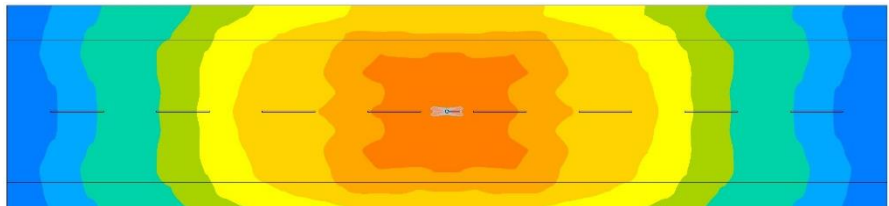


### LEVO3 O10



**Light distribution:**  
Axially symmetric wide

**Characteristic:**  
For main road illumination



Mounting Height: 8,m  
 Distance to roadway: middle  
 Width of roadway: 8,0m  
 Width of walkway: 2,0m



# LEVO<sub>3</sub>

---

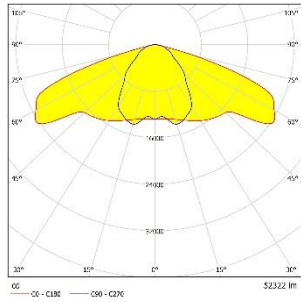
Optics Overview | Flood- and Sports light

LPH 16m

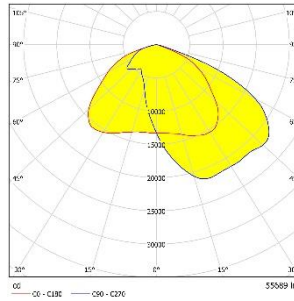
# LEVO3

## Optics Overview | Flood- and Sports light

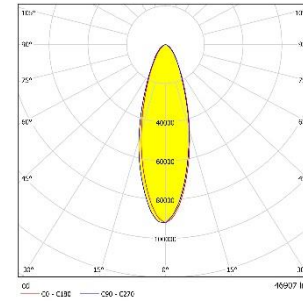
LEVO3 O10



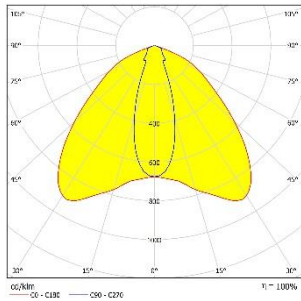
LEVO3 O14



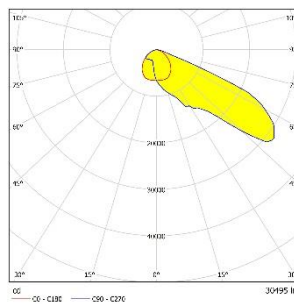
LEVO3 O15



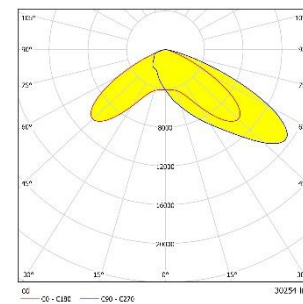
LEVO3 O16



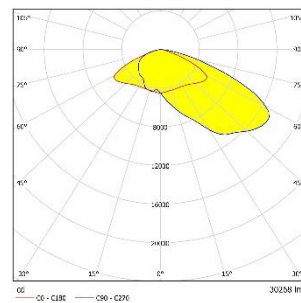
LEVO3 O20



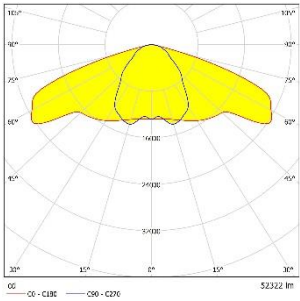
LEVO3 O23



LEVO3 O24

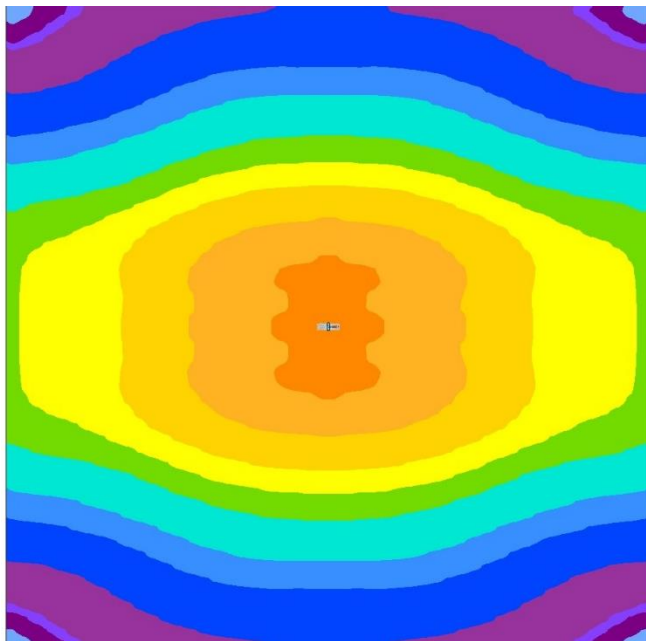


### LEVO3 O10

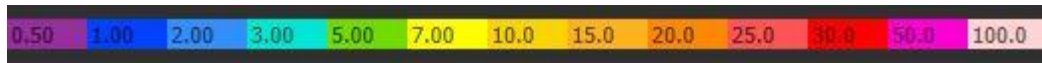


**Light distribution:**  
Axially symmetric wide

**Characteristic:**  
For main road illumination

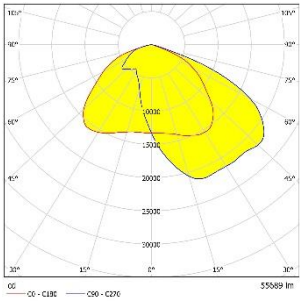


LPH: 16,0m  
Neigung : 0°  
Platzfläche: 50x50m





### LEVO3 O14

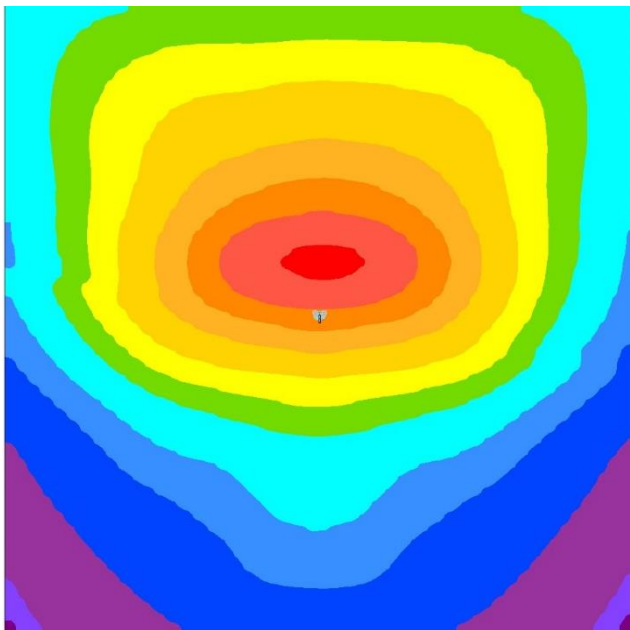


**Light distribution:**

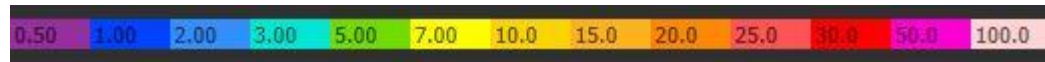
Asymmetric narrow distribution

**Characteristic:**

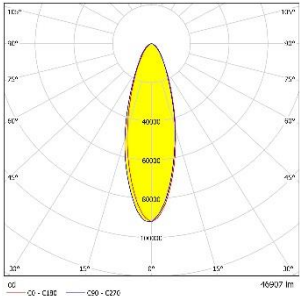
For the illumination of storage areas



LPH: 16,0m  
Neigung : 0°  
Platzfläche: 50x50m

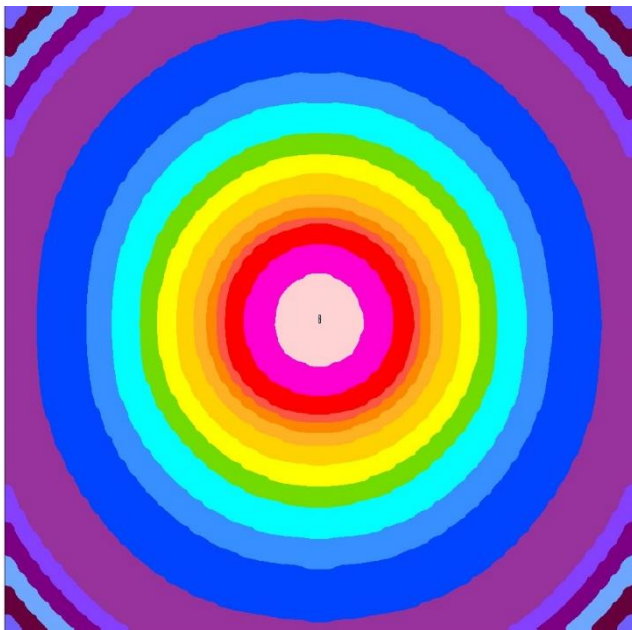


### LEVO3 O15



**Light distribution:**  
Symmetrical, optimised for illuminance

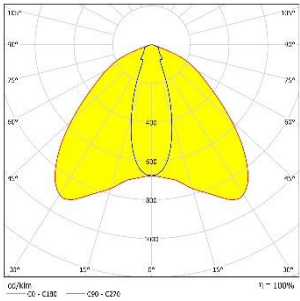
**Characteristic:**  
For spot illumination



LPH: 16,0m  
Neigung : 0°  
Platzfläche: 50x50m



### LEVO3 O16

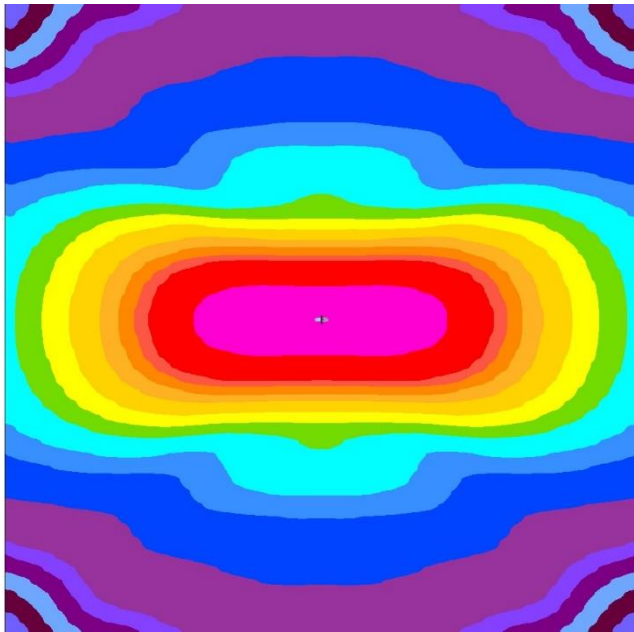


**Light distribution:**

Axially symmetric, optimised for luminance

**Characteristic:**

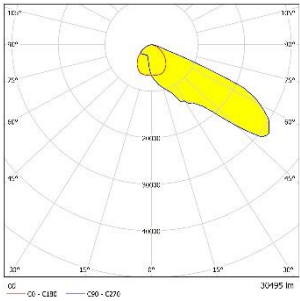
For illumination of large areas



LPH: 16,0m  
Neigung : 0°  
Platzfläche: 50x50m



### LEVO3 O20

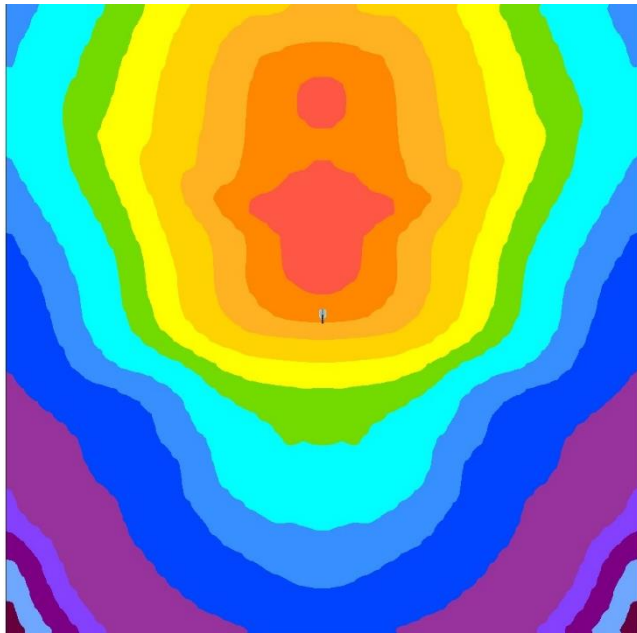


**Light distribution:**

Asymmetrical, forward narrow-beam distribution

**Characteristic:**

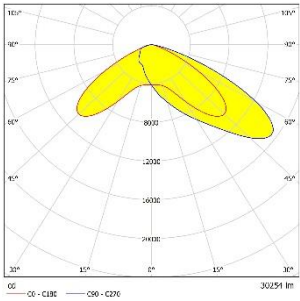
For the illumination of large areas



LPH: 16,0m  
Neigung : 0°  
Platzfläche: 50x50m

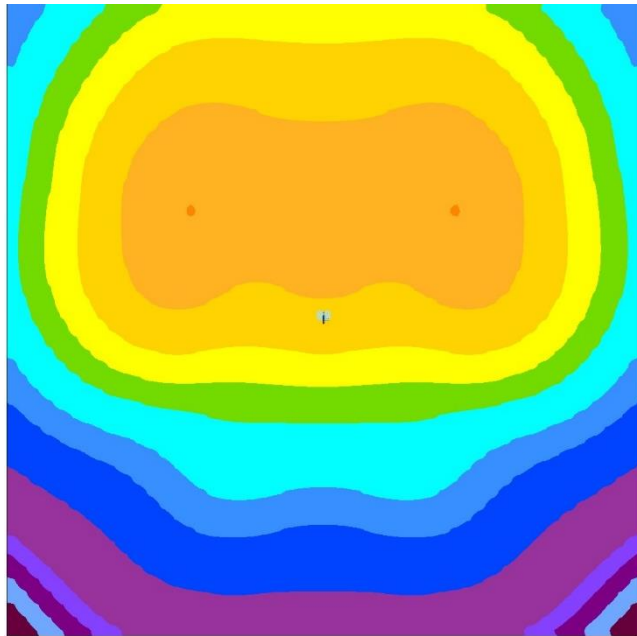


### LEVO3 O23



**Light distribution:**  
Asymmetrical, optimised for luminance

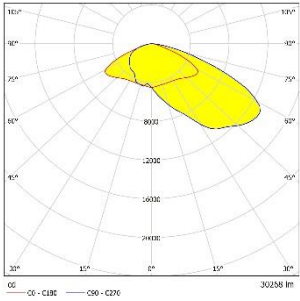
**Characteristic:**  
For the illumination of large areas



LPH: 16,0m  
Neigung : 0°  
Platzfläche: 50x50m

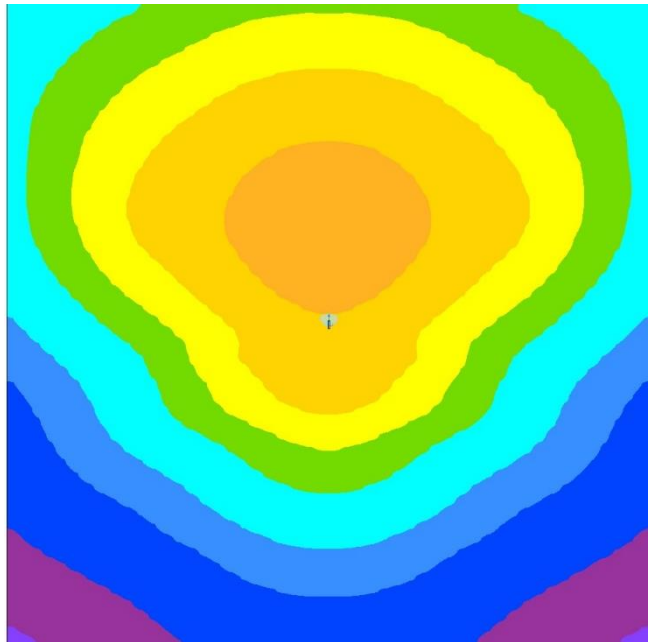


### LEVO3 O24



**Light distribution:**  
Asymmetric extra narrow distribution

**Characteristic:**  
For e.g. parking space illumination

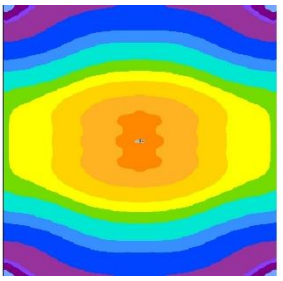


LPH: 16,0m  
Neigung : 0°  
Platzfläche: 50x50m

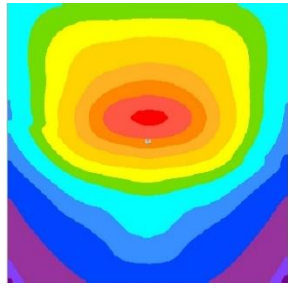




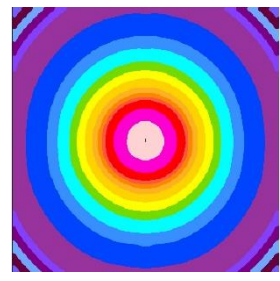
LEVO3 O10



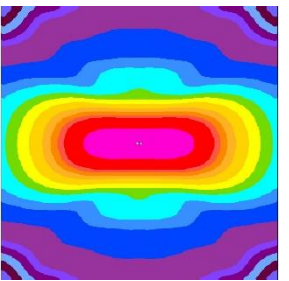
LEVO3 O14



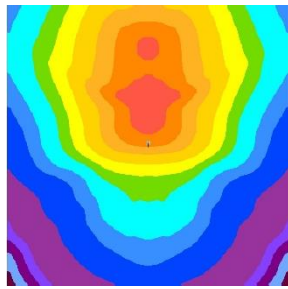
LEVO3 O15



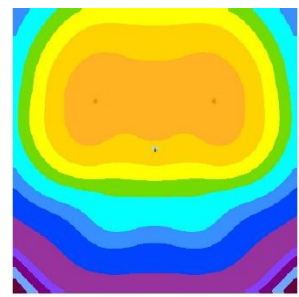
LEVO3 O16



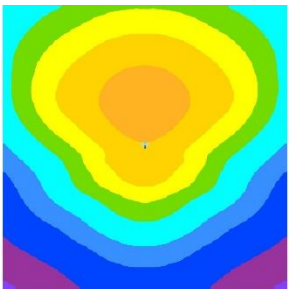
LEVO3 O20



LEVO3 O23



LEVO3 O24



LPH: 16,0m  
Neigung : 0°  
Platzfläche: 50x50m



THANK YOU.

---